

FY27 Appropriation Request Checklist

Agency Name: Legislative Finance Committee

Business Unit: 11200

Reports to Include in PDF Submission

Form #	Title	
<input checked="" type="checkbox"/>	Cvr Ltr Cover Letter	<i>Agency Level</i>
<input checked="" type="checkbox"/>	S-1 Certification	<i>Agency Level</i>
<input checked="" type="checkbox"/>	S-2 Organizational Chart	<i>Agency/Program Level</i>
<input checked="" type="checkbox"/>	S-8 Financial Summary (BFM)	<i>Agency/Program Level</i>
<input checked="" type="checkbox"/>	S-9 Account Code Revenue / Expenditure Report	<i>Agency/Program Level</i>
<input type="checkbox"/>	S-10 Fund Balance Projection	<i>Fund Level</i>
<input checked="" type="checkbox"/>	S-13 Detail of Rate Line Items (see instructions)	<i>Agency Level</i>
<input checked="" type="checkbox"/>	P-1 Program Narrative	<i>Program Level</i>
<input type="checkbox"/>	R-2 Transfer Report	<i>Agency Level</i>
<input checked="" type="checkbox"/>	REV/EXP Revenue-Expenditure Comparison Report	<i>Agency/Program Level</i>
<input type="checkbox"/>	FFRW Detail of Federal Funds Revenue Worksheet	<i>Agency/Program Level</i>
<input type="checkbox"/>	EB-1 Expansion Justifications	<i>Program Level</i>
<input type="checkbox"/>	EB-2 Expansion Fiscal Summary	<i>Program Level</i>
<input type="checkbox"/>	EB-3 Expansion Line Item Detail	<i>Program Level</i>
<input type="checkbox"/>	LFR Legislating for Results Expansion Tool	<i>Program Level</i>
<input checked="" type="checkbox"/>	E4 Pcode Detail	<i>Program Level</i>
<input checked="" type="checkbox"/>	ES Contract by Pcode	<i>Program Level</i>
<input type="checkbox"/>	SAR Special Appropriation Request Report	<i>Agency Level</i>
<input type="checkbox"/>	APR Annual Performance Report	<i>Program Level</i>
<input type="checkbox"/>	Table 2 Table 2 Performance Measure Summary	<i>Program Level</i>
<input checked="" type="checkbox"/>	SP Strategic Plan	<i>Agency Level</i>
<input type="checkbox"/>	ITP Information Technology Plan	<i>Agency Level</i>
<input type="checkbox"/>	C-1 Base Operating Budget	<i>Agency Level</i>
<input type="checkbox"/>	C-2 IT Request Plan	<i>Agency Level</i>
<input type="checkbox"/>	Perf Audit Update to LFC Performance Audits (within last 2 years)	<i>Agency Level</i>

Documents to Attach in BFM (PDF Optional)

<input type="checkbox"/>	Board Cert Board or Commission Budget Certification	<i>Where to Attach</i> <i>Form 9900</i>
<input type="checkbox"/>	E-6B Leased Passenger-Related Vehicles	<i>Form 3300/4300</i>



NEW MEXICO
LEGISLATIVE
FINANCE
COMMITTEE

Business Unit: 11200
APPROPRIATION REQUEST
FISCAL YEAR 2027

Representative Nathan P. Small
Chair

Representative Jack Chatfield
Representative Mercedith A. Dixon
Representative Rebecca Dow
Representative Susan K. Herrera
Representative Derrick J. Lente
Representative Joseph Sanchez
Representative Harlan Vincent

State of New Mexico
**LEGISLATIVE FINANCE
COMMITTEE**



Charles Sallee
Director

325 Don Gaspar, Suite 101 • Santa Fe, NM 87501
Phone (505) 986-4550 • Fax: (505) 986-4545

Senator George K. Muñoz
Vice Chair

Senator Pete Campos
Senator Roberto "Bobby" J. Gonzales
Senator Steve D. Lanier
Senator Benny Shendo Jr.
Senator Nicole Tobiasen
Senator Linda M. Trujillo
Senator Pat Woods

August 29, 2025

Dr. Andrew Miner
State Budget Director/Deputy Cabinet Secretary
Department of Finance and Administration
407 Galisteo Street
Santa Fe, NM 87501

Dr. Miner, The Legislative Finance Committee has approved a budget request of \$7,685.0 for FY27; a flat budget request compared to FY26 operating budget. Please do not hesitate to contact Kelly Klundt or Annamae Montoya, if you have any questions relating to the LFC budget request.

Respectfully,

A handwritten signature in black ink, appearing to read "Nathan Small".

Representative Nathan Small, Chair

A handwritten signature in black ink, appearing to read "Charles Sallee".

Charles Sallee
Director

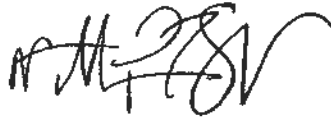
Agency Name: Legislative Finance Committee

Business Unit: 11200

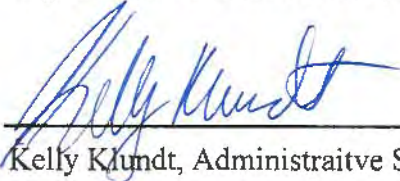
I hereby certify that the accompanying summary and detailed statements are true and correct to the best of my knowledge and belief and that the arithmetic accuracy of all numeric information has been verified.



Charles Sallee, Director



Representative Nathan Small, Chair



Kelly Klundt, Administrative Services Manager/CFO

325 Don Gaspar Suite 101
Santa Fe, NM 87501

505-986-4600

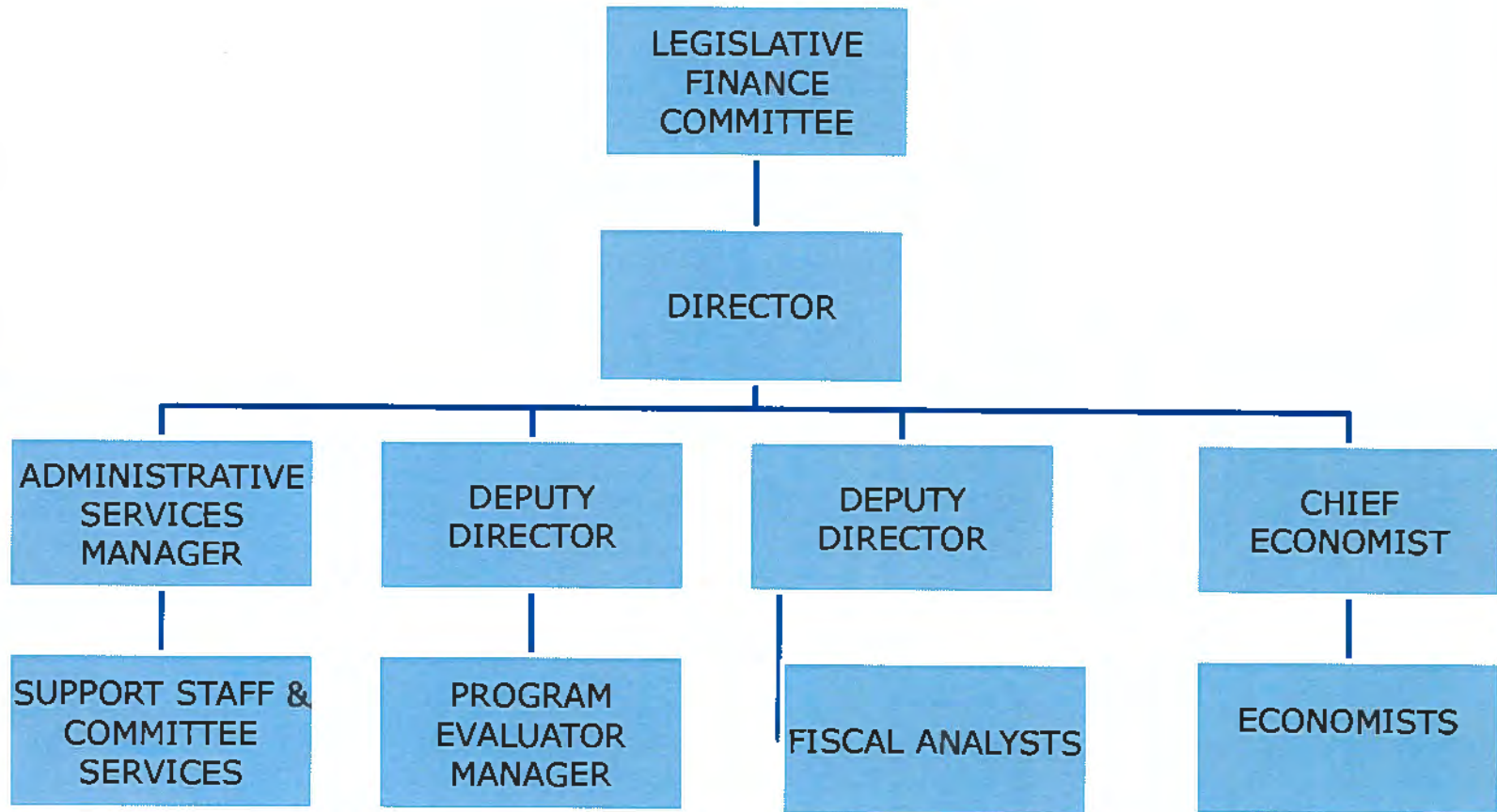
Kelly.Klundt@nmlegis.gov

Note: Appropriation Requests for agencies headed by a board or commission must be approved by the board or commission by official action and signed by the chairperson. Operating Budgets of other agencies must be signed by the director or secretary. Appropriation Requests not properly signed will be returned.

Agency Name: Legislative Finance Committee
Program Name: Legislative Finance Committee

Business Unit: 11200
Program Code: P100

**APPROPRIATION REQUEST
ORGANIZATION CHART
FORM S-2**



Check Box if this form is a revision

Revision no:

Revision Date:

Page

Legislative Finance Committee

State of New Mexico
S-8 Financial Summary

BU PCode Department
11201 0000 0000000000

(Dollars in Thousands)

	2024-25 Opbud	2024-25 Actuals	2025-26 Opbud	2026-27 PCF Proj	----- FY 2027 Agency Request -----		Total
					Base	Expansion	
REVENUE							
111 General Fund Transfers	7,460.7	7,316.8	7,685.0	0.0	7,685.0	0.0	7,685.0
112 Other Transfers	0.0	143.9	0.0	0.0	0.0	0.0	0.0
REVENUE, TRANSFERS	7,460.7	7,460.7	7,685.0	0	7,685.0	0.0	7,685.0
REVENUE	7,460.7	7,460.7	7,685.0	0	7,685.0	0.0	7,685.0
EXPENSE							
200 Personal services and employee benefits	6,438.7	6,249.3	6,749.4	7,134.9	6,749.4	0.0	6,749.4
300 Contractual services	386.0	417.3	386.0	0.0	386.0	0.0	386.0
400 Other	636.0	402.9	549.6	0.0	549.6	0.0	549.6
EXPENDITURES	7,460.7	7,069.5	7,685.0	7134.905	7,685.0	0.0	7,685.0
EXPENSE	7,460.7	7,069.5	7,685.0	7134.905	7,685.0	0.0	7,685.0
FTE POSITIONS							
810 Permanent	46.00	0.00	46.00	50.00	46.00	0.00	46.00
830 Temporary	1.25	0.00	1.25	0.00	1.25	0.00	1.25
FTEs	47.25	0.00	47.25	50.00	47.25	0.00	47.25
FTE POSITIONS	47.25	0.00	47.25	60.00	47.25	0.00	47.25

Legislative Finance Committee

BU PCode Department
11200 0000 0000000000

State of New Mexico
S-9 Account Code Revenue/Expenditure Summary
(Dollars in Thousands)

		2024-25	2024-25	2025-26	2026-27	----- FY 2027 Agency Request -----		
		Opbud	Actuals	Opbud	PCF Proj	Base	Expansion	Total
499105	General Fd. Appropriation	7,460.7	7,316.8	7,685.0	0.0	7,685.0	0.0	7,685.0
111	General Fund Transfers	7,460.7	7,316.8	7,685.0	0.0	7,685.0	0.0	7,685.0
499905	Other Financing Sources	0.0	143.9	0.0	0.0	0.0	0.0	0.0
112	Other Transfers	0.0	143.9	0.0	0.0	0.0	0.0	0.0
TOTAL REVENUE		7,460.7	7,460.7	7,685.0	0	7,685.0	0.0	7,685.0
520100	Exempt Perm Positions P/T&F/T	4,967.8	4,589.1	4,950.0	5,174.1	4,938.8	0.0	4,938.8
520500	Temporary Positions F/T & P/T	22.2	16.5	17.7	0.0	17.7	0.0	17.7
520600	Paid Unused Sick Leave	6.0	11.8	8.0	0.0	8.0	0.0	8.0
520700	Overtime & Other Premium Pay	6.0	1.5	2.0	0.0	2.0	0.0	2.0
520800	Annl & Comp Paid At Separation	25.0	38.5	36.9	0.0	36.9	0.0	36.9
521100	Group Insurance Premium	318.0	268.6	354.5	500.3	354.5	0.0	354.5
521200	Retirement Contributions	718.0	883.0	909.2	1,032.6	909.2	0.0	909.2
521300	F I C A	290.2	340.8	364.8	319.6	364.8	0.0	364.8
521400	Workers' Comp Assessment Fee	0.4	0.4	0.4	0.0	0.4	0.0	0.4
521410	GSD Work Comp Insur Premium	2.4	2.4	3.3	0.0	3.4	0.0	3.4
521600	Employee Liability Ins Premium	4.7	4.7	8.1	0.0	19.2	0.0	19.2
521700	RHC Act Contributions	78.0	91.8	94.5	108.4	94.5	0.0	94.5
200	Personal services and employee ber	6,438.7	6,249.3	6,749.4	7,134.9	6,749.4	0.0	6,749.4
535200	Professional Services	377.0	408.7	376.5	0.0	375.1	0.0	375.1
535300	Other Services	0.0	0.8	0.0	0.0	0.0	0.0	0.0
535400	Audit Services	9.0	7.8	9.5	0.0	10.9	0.0	10.9
300	Contractual services	386.0	417.3	386.0	0.0	386.0	0.0	386.0
542001	Legis Voting Mbr PerDiem&Mile	336.0	156.6	236.0	0.0	236.0	0.0	236.0
542100	Employee I/S Mileage & Fares	38.5	29.1	30.0	0.0	30.0	0.0	30.0
542200	Employee I/S Meals & Lodging	70.6	27.7	40.6	0.0	40.6	0.0	40.6
542800	State Transp Pool Charges	1.3	0.9	1.3	0.0	1.3	0.0	1.3
543200	Maint - Furn, Fixt, Equipment	9.5	0.0	9.5	0.0	9.5	0.0	9.5
543500	Maint - Supplies	0.0	1.0	0.1	0.0	0.1	0.0	0.1
543830	IT HW/SW Agreements	21.0	5.3	21.0	0.0	21.0	0.0	21.0
544000	Supply Inventory IT	1.0	11.3	1.0	0.0	1.0	0.0	1.0
544100	Supplies-Office Supplies	4.8	5.8	4.8	0.0	4.8	0.0	4.8

544900	Supplies-Inventory Exempt	5.0	11.0	5.0	0.0	5.0	0.0	5.0
545710	DOIT HCM Assessment Fees	15.5	15.5	16.1	0.0	17.8	0.0	17.8
545900	Printing & Photo Services	26.0	24.7	26.0	0.0	26.0	0.0	26.0
546100	Postage & Mail Services	2.1	0.0	2.1	0.0	2.1	0.0	2.1
546400	Rent Of Land & Buildings	1.0	0.0	1.0	0.0	1.0	0.0	1.0
546500	Rent Of Equipment	21.6	11.7	21.6	0.0	19.9	0.0	19.9
546600	Communications	3.0	2.7	3.0	0.0	3.0	0.0	3.0
546700	Subscriptions/Dues/License Fee	11.3	18.6	12.8	0.0	12.8	0.0	12.8
546800	Employee Training & Education	36.0	53.9	76.0	0.0	76.0	0.0	76.0
546900	Advertising	0.5	0.7	0.5	0.0	0.5	0.0	0.5
547900	Miscellaneous Expense	1.8	2.1	1.8	0.0	1.8	0.0	1.8
549600	Employee O/S Mileage & Fare	14.5	14.9	20.9	0.0	20.9	0.0	20.9
549700	Employee O/S Meals & Lodging	17.0	9.3	18.5	0.0	18.5	0.0	18.5
400	Other	636.0	402.9	549.6	0.0	549.6	0.0	549.6
TOTAL EXPENSE		7,460.7	7,069.5	7,685.0	7,134.905	7,685.0	0.0	7,685.0
810	Permanent	46.00	0.00	46.00	50.00	46.00	0.00	46.00
810	Permanent	46.00	0.00	46.00	50.00	46.00	0.00	46.00
830	Temporary	1.25	0.00	1.25	0.00	1.25	0.00	1.25
830	Temporary	1.25	0.00	1.25	0.00	1.25	0.00	1.25
TOTAL FTE POSITIONS		47.25	0.00	47.25	50.00	47.25	0.00	47.25

Legislative Finance Committee

BU PCode Department
 11200 P100 000000

State of New Mexico
S-9 Account Code Revenue/Expenditure Summary
 (Dollars in Thousands)

		2024-25	2024-25	2025-26	2026-27	----- FY 2027 Agency Request -----		
		Opbud	Actuals	Opbud	PCF Proj	Base	Expansion	Total
499105	General Fd. Appropriation	7,460.7	7,316.8	7,685.0	0.0	7,685.0	0.0	7,685.0
111	General Fund Transfers	7,460.7	7,316.8	7,685.0	0.0	7,685.0	0.0	7,685.0
499905	Other Financing Sources	0.0	143.9	0.0	0.0	0.0	0.0	0.0
112	Other Transfers	0.0	143.9	0.0	0.0	0.0	0.0	0.0
TOTAL REVENUE		7,460.7	7,460.7	7,685.0	0.0	7,685.0	0.0	7,685.0
520100	Exempt Perm Positions P/T&F/T	4,967.8	4,589.1	4,950.0	5,174.1	4,938.8	0.0	4,938.8
520500	Temporary Positions F/T & P/T	22.2	16.5	17.7	0.0	17.7	0.0	17.7
520600	Paid Unused Sick Leave	6.0	11.8	8.0	0.0	8.0	0.0	8.0
520700	Overtime & Other Premium Pay	6.0	1.5	2.0	0.0	2.0	0.0	2.0
520800	Annl & Comp Paid At Separation	25.0	38.5	36.9	0.0	36.9	0.0	36.9
521100	Group Insurance Premium	318.0	268.8	354.5	500.3	354.5	0.0	354.5
521200	Retirement Contributions	718.0	883.0	909.2	1,032.6	909.2	0.0	909.2
521300	F I C A	290.2	340.8	364.8	319.6	364.8	0.0	364.8
521400	Workers' Comp Assessment Fee	0.4	0.4	0.4	0.0	0.4	0.0	0.4
521410	GSD Work Comp Insur Premium	2.4	2.4	3.3	0.0	3.4	0.0	3.4
521600	Employee Liability Ins Premium	4.7	4.7	8.1	0.0	19.2	0.0	19.2
521700	RHC Act Contributions	78.0	91.8	94.5	108.4	94.5	0.0	94.5
200	Personal services and employee ber	6,438.7	6,249.3	6,749.4	7,134.9	6,749.4	0.0	6,749.4
535200	Professional Services	377.0	408.7	376.5	0.0	375.1	0.0	375.1
535300	Other Services	0.0	0.8	0.0	0.0	0.0	0.0	0.0
535400	Audit Services	9.0	7.8	9.5	0.0	10.9	0.0	10.9
300	Contractual services	386.0	417.3	386.0	0.0	386.0	0.0	386.0
542001	Legis Voting Mbr PerDiem&Mile	336.0	156.6	236.0	0.0	236.0	0.0	236.0
542100	Employee I/S Mileage & Fares	36.5	29.1	30.0	0.0	30.0	0.0	30.0
542200	Employee I/S Meals & Lodging	70.6	27.7	40.6	0.0	40.6	0.0	40.6
542800	State Transp Pool Charges	1.3	0.9	1.3	0.0	1.3	0.0	1.3
543200	Maint - Furn, Fixt, Equipment	9.5	0.0	9.5	0.0	9.5	0.0	9.5
543500	Maint - Supplies	0.0	1.0	0.1	0.0	0.1	0.0	0.1
543830	IT HW/SW Agreements	21.0	5.3	21.0	0.0	21.0	0.0	21.0
544000	Supply Inventory IT	1.0	11.3	1.0	0.0	1.0	0.0	1.0
544100	Supplies-Office Supplies	4.8	5.8	4.8	0.0	4.8	0.0	4.8

544900	Supplies-Inventory Exempt	5.0	11.0	5.0	0.0	5.0	0.0	5.0
545710	DOIT HCM Assessment Fees	15.5	15.5	16.1	0.0	17.8	0.0	17.8
545900	Printing & Photo Services	26.0	24.7	26.0	0.0	26.0	0.0	26.0
546100	Postage & Mail Services	2.1	0.0	2.1	0.0	2.1	0.0	2.1
546400	Rent Of Land & Buildings	1.0	0.0	1.0	0.0	1.0	0.0	1.0
546500	Rent Of Equipment	21.6	11.7	21.6	0.0	19.9	0.0	19.9
546600	Communications	3.0	2.7	3.0	0.0	3.0	0.0	3.0
546700	Subscriptions/Dues/License Fee	11.3	18.6	12.8	0.0	12.8	0.0	12.8
546800	Employee Training & Education	36.0	53.9	76.0	0.0	76.0	0.0	76.0
546900	Advertising	0.5	0.7	0.5	0.0	0.5	0.0	0.5
547900	Miscellaneous Expense	1.8	2.1	1.8	0.0	1.8	0.0	1.8
549600	Employee O/S Mileage & Fares	14.5	14.9	20.9	0.0	20.9	0.0	20.9
549700	Employee O/S Meals & Lodging	17.0	9.3	18.5	0.0	18.5	0.0	18.5
400	Other	636.0	402.9	549.6	0.0	549.6	0.0	549.6
TOTAL EXPENSE		7,460.7	7,069.5	7,685.0	7,134.9	7,685.0	0.0	7,685.0
810	Permanent	46.00	0.00	46.00	50.00	46.00	0.00	46.00
810	Permanent	46.00	0.00	46.00	50.00	46.00	0.00	46.00
830	Temporary	1.25	0.00	1.25	0.00	1.25	0.00	1.25
830	Temporary	1.25	0.00	1.25	0.00	1.25	0.00	1.25
TOTAL FTE POSITIONS		47.25	0.00	47.25	50.00	47.25	0.00	47.25

Legislative Finance Committee

BU PCode Department

11200 0000 000000000

State of New Mexico
S-9 Account Code Revenue Summary
 (Dollars in Thousands)

Provider PCode	2024-25	2024-25	2025-26	2026-27	----- FY 2027 Agency Request -----		
	Opbud	Actuals	Opbud	PCF Proj	Base	Expansion	Total
499105 General Fd. Appropriation	7,460.7	7,316.8	0.0	0.0	7,685.0	0.0	7,685.0
111 General Fund Transfers	7,460.7	7,316.8	7,685.0	0.0	7,685.0	0.0	7,685.0
499905 Other Financing Sources	0.0	143.9	0.0	0.0	0.0	0.0	0.0
112 Other Transfers	0.0	143.9	0.0	0.0	0.0	0.0	0.0
TOTAL REVENUE	7,460.7	7,460.7	7,685.0	0	7,685.0	0.0	7,685.0

Legislative Finance Committee

BU PCode Department
 11200 P100 000000

State of New Mexico
S-9 Account Code Revenue Summary
 (Dollars in Thousands)

Provider		2024-25	2024-25	2025-26	2026-27	----- FY 2027 Agency Request -----		
PCode		Opbud	Actuals	Opbud	PCF Proj	Base	Expansion	Total
499105	General Fd. Appropriation	7,460.7	7,316.8	7,685.0	0.0	7,685.0	0.0	7,685.0
111	General Fund Transfers	7,460.7	7,316.8	7,685.0	0.0	7,685.0	0.0	7,685.0
499905	Other Financing Sources	0.0	143.9	0.0	0.0	0.0	0.0	0.0
112	Other Transfers	0.0	143.9	0.0	0.0	0.0	0.0	0.0
TOTAL REVENUE		7,460.7	7,460.7	7,685.0	0.0	7,685.0	0.0	7,685.0

Legislative Finance Committee

BU PCode Department
 11200 0000 0000000000

State of New Mexico
S-9 Account Code Expenditure Summary
 (Dollars in Thousands)

	2024-25 Opbud	2024-25 Actuals	2025-26 Opbud	2026-27 PCF Proj	----- FY 2027 Agency Request -----		
					Base	Expansion	Total
520100 Exempt Perm Positions P/T&F/T	4,967.8	4,589.1	4,950.0	5,174.1	4,938.8	0.0	4,938.8
520500 Temporary Positions F/T & P/T	22.2	16.5	17.7	0.0	17.7	0.0	17.7
520600 Paid Unused Sick Leave	6.0	11.8	8.0	0.0	8.0	0.0	8.0
520700 Overtime & Other Premium Pay	6.0	1.5	2.0	0.0	2.0	0.0	2.0
520800 Annl & Comp Paid At Separation	25.0	38.5	36.9	0.0	36.9	0.0	36.9
521100 Group Insurance Premium	318.0	288.8	354.5	500.3	354.5	0.0	354.5
521200 Retirement Contributions	718.0	883.0	909.2	1,032.6	909.2	0.0	909.2
521300 F I C A	290.2	340.8	364.8	319.6	364.8	0.0	364.8
521400 Workers' Comp Assessment Fee	0.4	0.4	0.4	0.0	0.4	0.0	0.4
521410 GSD Work Comp Insur Premium	2.4	2.4	3.3	0.0	3.4	0.0	3.4
521600 Employee Liability Ins Premium	4.7	4.7	8.1	0.0	19.2	0.0	19.2
521700 RHC Act Contributions	78.0	91.8	94.5	108.4	94.5	0.0	94.5
200 Personal services and employee benefits	6,438.7	6,249.3	6,749.4	7,134.9	6,749.4	0.0	6,749.4
535200 Professional Services	377.0	408.7	376.5	0.0	375.1	0.0	375.1
535300 Other Services	0.0	0.8	0.0	0.0	0.0	0.0	0.0
535400 Audit Services	9.0	7.8	9.5	0.0	10.9	0.0	10.9
300 Contractual services	386.0	417.3	386.0	0.0	386.0	0.0	386.0
542001 Legis Voting Mbr PerDiem&Mile	336.0	156.6	236.0	0.0	238.0	0.0	236.0
542100 Employee I/S Mileage & Fares	36.5	29.1	30.0	0.0	30.0	0.0	30.0
542200 Employee I/S Meals & Lodging	70.6	27.7	40.6	0.0	40.6	0.0	40.6
542800 State Transp Pool Charges	1.3	0.9	1.3	0.0	1.3	0.0	1.3
543200 Maint - Furn, Fixt, Equipment	9.5	0.0	9.5	0.0	9.5	0.0	9.5
543500 Maint - Supplies	0.0	1.0	0.1	0.0	0.1	0.0	0.1
543830 IT HW/SW Agreements	21.0	5.3	21.0	0.0	21.0	0.0	21.0
544000 Supply Inventory IT	1.0	11.3	1.0	0.0	1.0	0.0	1.0
544100 Supplies-Office Supplies	4.8	5.8	4.8	0.0	4.8	0.0	4.8
544900 Supplies-Inventory Exempt	5.0	11.0	5.0	0.0	5.0	0.0	5.0
545710 DOIT HCM Assessment Fees	15.5	15.5	16.1	0.0	17.8	0.0	17.8
545900 Printing & Photo Services	26.0	24.7	26.0	0.0	26.0	0.0	26.0
546100 Postage & Mail Services	2.1	0.0	2.1	0.0	2.1	0.0	2.1
546400 Rent Of Land & Buildings	1.0	0.0	1.0	0.0	1.0	0.0	1.0

546500 Rent Of Equipment	21.6	11.7	21.6	0.0	19.9	0.0	19.9
546600 Communications	3.0	2.7	3.0	0.0	3.0	0.0	3.0
546700 Subscriptions/Dues/License Fee	11.3	18.6	12.8	0.0	12.8	0.0	12.8
546800 Employee Training & Education	36.0	53.9	76.0	0.0	76.0	0.0	76.0
546900 Advertising	0.5	0.7	0.5	0.0	0.5	0.0	0.5
547900 Miscellaneous Expense	1.8	2.1	1.8	0.0	1.8	0.0	1.8
549600 Employee O/S Mileage & Fares	14.5	14.9	20.9	0.0	20.9	0.0	20.9
549700 Employee O/S Meals & Lodging	17.0	9.3	18.5	0.0	18.5	0.0	18.5
400 Other	636.0	402.9	549.6	0.0	549.6	0.0	549.6
TOTAL EXPENSE	7,460.7	7,069.5	7,685.0	7,134.905	7,685.0	0.0	7,685.0

Legislative Finance Committee

BU PCode Department
 11200 P100 000000

State of New Mexico
S-9 Account Code Expenditure Summary
 (Dollars in Thousands)

	2024-25	2024-25	2025-26	2026-27	FY 2027 Agency Request		
	Opbud	Actuals	Opbud	PCF Proj	Base	Expansion	Total
520100 Exempt Perm Positions P/T&F/T	4,967.8	4,589.1	4,950.0	5,174.1	4,938.8	0.0	4,938.8
520500 Temporary Positions F/T & P/T	22.2	16.5	17.7	0.0	17.7	0.0	17.7
520800 Paid Unused Sick Leave	6.0	11.8	8.0	0.0	8.0	0.0	8.0
520700 Overtime & Other Premium Pay	6.0	1.5	2.0	0.0	2.0	0.0	2.0
520800 Annl & Comp Paid At Separation	25.0	38.5	36.9	0.0	36.9	0.0	36.9
521100 Group Insurance Premium	318.0	268.8	354.5	500.3	354.5	0.0	354.5
521200 Retirement Contributions	718.0	883.0	909.2	1,032.6	909.2	0.0	909.2
521300 F I C A	290.2	340.8	364.8	319.6	364.8	0.0	364.8
521400 Workers' Comp Assessment Fee	0.4	0.4	0.4	0.0	0.4	0.0	0.4
521410 GSD Work Comp Insur Premium	2.4	2.4	3.3	0.0	3.4	0.0	3.4
521600 Employee Liability Ins Premium	4.7	4.7	8.1	0.0	19.2	0.0	19.2
521700 RHC Act Contributions	78.0	91.8	94.5	108.4	94.5	0.0	94.5
200 Personal services and employe	6,438.7	6,249.3	6,749.4	7,134.9	6,749.4	0.0	6,749.4
535200 Professional Services	377.0	408.7	376.5	0.0	375.1	0.0	375.1
535300 Other Services	0.0	0.8	0.0	0.0	0.0	0.0	0.0
535400 Audit Services	9.0	7.8	9.5	0.0	10.9	0.0	10.9
300 Contractual services	386.0	417.3	386.0	0.0	386.0	0.0	386.0
542001 Legis Voting Mbr PerDiem&Mile	336.0	156.6	236.0	0.0	236.0	0.0	236.0
542100 Employee I/S Mileage & Fares	36.5	29.1	30.0	0.0	30.0	0.0	30.0
542200 Employee I/S Meals & Lodging	70.6	27.7	40.6	0.0	40.6	0.0	40.6
542800 State Transp Pool Charges	1.3	0.9	1.3	0.0	1.3	0.0	1.3
543200 Maint - Fum, Fixt, Equipment	9.5	0.0	9.5	0.0	9.5	0.0	9.5
543500 Maint - Supplies	0.0	1.0	0.1	0.0	0.1	0.0	0.1
543830 IT HW/SW Agreements	21.0	5.3	21.0	0.0	21.0	0.0	21.0
544000 Supply Inventory IT	1.0	11.3	1.0	0.0	1.0	0.0	1.0
544100 Supplies-Office Supplies	4.8	5.8	4.8	0.0	4.8	0.0	4.8
544900 Supplies-Inventory Exempt	5.0	11.0	5.0	0.0	5.0	0.0	5.0
545710 DOIT HCM Assessment Fees	15.5	15.5	16.1	0.0	17.8	0.0	17.8
545900 Prntng & Photo Services	28.0	24.7	26.0	0.0	26.0	0.0	26.0
546100 Postage & Mail Services	2.1	0.0	2.1	0.0	2.1	0.0	2.1
546400 Rent Of Land & Buildings	1.0	0.0	1.0	0.0	1.0	0.0	1.0
546500 Rent Of Equipment	21.6	11.7	21.6	0.0	19.9	0.0	19.9

546600 Communications	3.0	2.7	3.0	0.0	3.0	0.0	3.0
546700 Subscriptions/Dues/License Fee	11.3	18.6	12.8	0.0	12.8	0.0	12.8
546800 Employee Training & Education	36.0	53.9	76.0	0.0	76.0	0.0	76.0
546900 Advertising	0.5	0.7	0.5	0.0	0.5	0.0	0.5
547900 Miscellaneous Expense	1.8	2.1	1.8	0.0	1.8	0.0	1.8
549600 Employee O/S Mileage & Fares	14.5	14.9	20.9	0.0	20.9	0.0	20.9
549700 Employee O/S Meals & Lodging	17.0	9.3	18.5	0.0	18.5	0.0	18.5
400 Other	636.0	402.9	549.6	0.0	549.6	0.0	549.6
TOTAL EXPENSE	7,460.7	7,069.5	7,685.0	7,134.905	7,685.0	0.0	7,685.0

Program Description: As the budget drafting agency for the Legislature, the finance committee and its staff are key to all legislative action. The thousand-page, three-volume annual budget recommendation reflects a year of research and analysis and is the starting point for budget deliberations among legislators and with executive agencies. In addition to the annual report and a comprehensive post-session review, agency staff drafted committee-sponsored legislation and produced close to 1,000 fiscal impact reports on essentially all legislation introduced during the 60-day 2025 session.

Major Issues and Accomplishments: The Legislative Finance Committee staff remains among the most important resources in the state for original research on an extensive array of topics. Staff analysis on crime rates and other public safety issues, child protective services, Medicaid, early childhood services, public schools and higher education, transportation, infrastructure, and natural resources and the environment is an essential resource for legislators and broadly informs the public discussion. In FY24, budget staff produced dozens of hearing briefs and other documents for committee hearings, and the Program Evaluation Unit produced 15 deeply researched, systematic evaluations and other reports on the results of state government spending and activity. Staff also created a citizens' guide to budget development, numerous newsletters, and finance fact sheets for the general public.

LFC economists continue to serve as leaders in the development of analysis and the revenue forecasts critical to the creation of the state budget and other fiscal decisions. LFC economists have been essential to efforts to extend the life of the slowing revenue boom by creating vehicles for setting aside surplus revenues to build interest-generating endowments that will produce income in the future. In addition to monitoring revenue generation and the health of investment funds, the unit produced a mid- to long-term revenue outlook, analyzed tax reforms, assisted in tax reform legislation, and drafted committee-endorsed legislation.

The agency has continued to improve the Legislating for Results framework by refining the LegisStat approach through which agencies and the committee collaborate on a specific performance issue, approaches for addressing key performance challenges. LegisStat reviews contributed to increased attention to effective use of dollars in the early childhood home visiting program, repeat child maltreatment, the role of effective teachers in public education, transportation infrastructure investment, and strategic planning for economic development.

In addition, LFC continues to work on transparency through the addition of data dashboards and other improvements to the

Overview of Request: The LFC budget request for FY27 is flat with FY26 operating budget.

Programmatic Changes:

Base Budget Justification:

REV EXP COMPARISON

(Dollars in Thousands)

11200 - Legislative Finance Committee

P100 - Legislative Finance Committee

	General Fund	Other Funds	Other Transfers	Federal Funds	Total
SOURCES Totals	7,685.0	0.0	0.0	0.0	7,685.0
Personal services and employee benefits	6,749.4	0.0	0.0	0.0	6749.4
Contractual services	388.0	0.0	0.0	0.0	386
Other	549.6	0.0	0.0	0.0	549.6
USES Total:	7,685.0	0.0	0.0	0.0	7,685.0
Net:	0.0	0.0	0.0	0.0	0.0

Legislative Finance Committee

BU PCode Department
 11200 P100 000000

State of New Mexico

E4/E5 Summary
 (Dollars in Thousands)

	2024-25	2025-26	FY 2027 Agency Request				Total
	Actuals	Opbud	GF	OSF	ISF/IAT	FF	
520100 Exempt Penn Positions P/T&F/T	4,589.1	4,950.0	4,938.8	0.0	0.0	0.0	4,938.8
520500 Temporary Positions F/T & P/T	16.5	17.7	17.7	0.0	0.0	0.0	17.7
520600 Paid Unused Sick Leave	11.8	8.0	8.0	0.0	0.0	0.0	8.0
520700 Overtime & Other Premium Pay	1.5	2.0	2.0	0.0	0.0	0.0	2.0
520800 Annl & Comp Paid At Separation	36.5	36.9	36.9	0.0	0.0	0.0	36.9
521100 Group Insurance Premium	268.8	354.5	354.5	0.0	0.0	0.0	354.5
521200 Retirement Contributions	883.0	909.2	909.2	0.0	0.0	0.0	909.2
521300 F I C A	340.8	364.8	364.8	0.0	0.0	0.0	364.8
521400 Workers' Comp Assessment Fee	0.4	0.4	0.4	0.0	0.0	0.0	0.4
521410 GSD Work Comp Insur Premium	2.4	3.3	3.4	0.0	0.0	0.0	3.4
521600 Employee Liability Ins Premium	4.7	8.1	19.2	0.0	0.0	0.0	19.2
521700 RHC Act Contributions	91.8	94.5	94.5	0.0	0.0	0.0	94.5
200 Personal services and employee ber	6,249.3	6,749.4	6,749.4	0.0	0.0	0.0	6,749.4
535200 Professional Services	408.7	376.5	375.1	0.0	0.0	0.0	375.1
535300 Other Services	0.8	0.0	0.0	0.0	0.0	0.0	0.0
535400 Audit Services	7.8	9.5	10.9	0.0	0.0	0.0	10.9
300 Contractual services	417.3	386.0	386.0	0.0	0.0	0.0	386.0
542001 Legis Voting Mbr PerDiem&Mile	156.6	236.0	236.0	0.0	0.0	0.0	236.0
542100 Employee I/S Mileage & Fares	29.1	30.0	30.0	0.0	0.0	0.0	30.0
542200 Employee I/S Meals & Lodging	27.7	40.6	40.6	0.0	0.0	0.0	40.6
542800 State Transp Pool Charges	0.9	1.3	1.3	0.0	0.0	0.0	1.3
543200 Maint - Furn, Fixt, Equipment	0.0	9.5	9.5	0.0	0.0	0.0	9.5
543500 Maint - Supplies	1.0	0.1	0.1	0.0	0.0	0.0	0.1
543830 IT HW/SW Agreements	5.3	21.0	21.0	0.0	0.0	0.0	21.0
544000 Supply Inventory IT	11.3	1.0	1.0	0.0	0.0	0.0	1.0
544100 Supplies-Office Supplies	5.8	4.8	4.8	0.0	0.0	0.0	4.8
544900 Supplies-Inventory Exempt	11.0	5.0	5.0	0.0	0.0	0.0	5.0
545710 DOIT HCM Assessment Fees	15.5	16.1	17.8	0.0	0.0	0.0	17.8
545900 Printing & Photo Services	24.7	26.0	26.0	0.0	0.0	0.0	26.0
546100 Postage & Mail Services	0.0	2.1	2.1	0.0	0.0	0.0	2.1
546400 Rent Of Land & Buildings	0.0	1.0	1.0	0.0	0.0	0.0	1.0
546500 Rent Of Equipment	11.7	21.6	19.9	0.0	0.0	0.0	19.9

546600	Communications	2.7	3.0	3.0	0.0	0.0	0.0	3.0
546700	Subscriptions/Dues/License Fee	18.6	12.8	12.8	0.0	0.0	0.0	12.8
546800	Employee Training & Education	53.9	76.0	76.0	0.0	0.0	0.0	76.0
546900	Advertising	0.7	0.5	0.5	0.0	0.0	0.0	0.5
547900	Miscellaneous Expense	2.1	1.8	1.8	0.0	0.0	0.0	1.8
549600	Employee O/S Mileage & Fares	14.9	20.9	20.9	0.0	0.0	0.0	20.9
549700	Employee O/S Meals & Lodging	9.3	18.5	18.5	0.0	0.0	0.0	18.5
400	Other	402.9	549.6	549.6	0.0	0.0	0.0	549.6
TOTAL EXPENSE		7,069.5	7,685.0	7,685.0	0.0	0.0	0.0	7,685.0



NEW MEXICO
LEGISLATIVE
FINANCE
COMMITTEE

STRATEGIC PLAN

**UPDATED FOR
FISCAL YEAR 2024
THROUGH
FISCAL YEAR 2026**

LFC Strategic Plan

INTRODUCTION

The Legislative Finance Committee (LFC) was first established as the fiscal and management arm of the New Mexico Legislature in 1957. Since its inception, the committee's role in the state budget process has grown as the complexity and size of the budget has increased. In 1991, the LFC assumed responsibility for the performance audit program, previously a part of the Office of the State Auditor.

LFC is composed of eight members of the Senate and eight members of the House of Representatives. Political parties are represented in proportion to membership in each chamber of the Legislature. The chairs of the House Appropriations and Finance Committee, the House Taxation and Revenue Committee, and the Senate Finance Committee are automatic members by law; the remaining LFC members are appointed by the legislative leadership.

New Mexico is unusual in that both the governor and an agency of the Legislature (LFC) propose comprehensive state budgets to the full Legislature. Only 10 other legislatures in the nation have some degree of "joint responsibility" with the executive for budget development, and only one of these states also conducts program evaluations as part of its budget office's main duties.

VISION STATEMENT

To be recognized nationally as a leader in fiscal and public policy analysis that is innovative and fiscally responsible.

MISSION STATEMENT

The purpose of the Legislative Finance Committee is to provide the Legislature with objective fiscal and public policy analysis, recommendations, and oversight of state agencies to improve performance and ensure accountability through effective allocation of resources for the benefit of all New Mexicans.

STRENGTHS, WEAKNESSES, OPPORTUNITIES, AND THREATS

As a service-based organization, LFC's credibility depends on quality, timeliness, and fairness. These essential elements can be expressed as our values in conducting our work for the Legislature and public.

In setting goals to achieve the LFC mission, staff of LFC met to discuss agency strengths, weaknesses, opportunities, and threats (SWOT). This SWOT brainstorming session yielded characteristics and ideas that can be grouped in broader themes to develop and achieve goals and objectives. In general, our most important strength is our staff, and our most significant challenge is access to information.

Staff identified strengths and weaknesses as internal to the organization and opportunities and threats as external.

INTERNAL STRENGTHS

The ability to achieve our mission depends heavily on the effectiveness of the staff. With less staff turnover, institutional knowledge and expertise are developed. Professional staff and expertise can better serve legislators and, ultimately, the public.

- Staff – credibility, professionalism, expertise, and diversity
- Team work and staff communication
- Office resources – adequate equipment and supplies
- Service to legislators
- Management, committee, and bipartisan legislative support
- External communication through publications, reports, and website

INTERNAL WEAKNESSES

Our greatest strength can be our most obvious vulnerability. Staff turnover—a result of recruitment of staff to senior positions in the administration—impacts institutional knowledge of agencies and issues. The allocation of staff time to priority budget areas will always be a challenge given the diverse and numerous issues before the Legislature.

- Staff retention
- Allocation of staff time to priority budget areas

EXTERNAL OPPORTUNITIES

Our greatest opportunity remains the ability to shape responsible fiscal policy through budget recommendations, ongoing program evaluations, and fiscal and economic policy analysis. To bolster that strength, LFC has opportunities to engage individuals, develop new partnerships, and use new data sources.

- Shape responsible fiscal policy
- Influence long-term planning and policy development
- Partner with constitutionally created agencies of government, e.g. State Auditor, Attorney General
- Improve coordination of legislative agencies
- Increase use of performance information
- Identify, evaluate, and use best practices of other states
- Enhance individual engagement
- Expand trainings for information in external IT systems, including SHARE
- Coordinate with outside research organizations

EXTERNAL THREATS

Timely and limited access to information is the most significant threat to staff's ability to serve the Legislature with strong, effective analysis. For example, the inability of the LFC staff to obtain critical information creates serious challenges in staff efforts to assess the full costs and benefits of state appropriations and agency performance. With revenue volatility a threat, it presents a challenge to the production of a fiscally responsible budget.

- Revenue volatility
- Accuracy of revenue estimate
- Court-driven appropriations
- Limited access to information from agencies
- Limited revenue streams

GOALS AND OBJECTIVES

GOAL 1: Provide annually a fiscally sound state budget recommendation that reflects committee priorities and addresses state needs.

- To reduce errors in revenue estimating and understand risks in economic forecasting.
- To fund state government operational budgets to support effective services to New Mexicans.
- To facilitate an effective capital outlay funding recommendation to address current and future statewide needs.
- To use performance and other data to assess the need for changes in funding during the formulation of budget recommendations.
- To enhance communication on budget needs through a process of budget development, deliberation, and dispensing of information.

GOAL 2: Facilitate well-informed policy decisions through objective analysis.

- To identify and report on significant policy issues through public hearings and publications.
- To provide high-quality support to the Legislature through informative hearings, bill analysis, and resource materials.
- To recommend improvements in state operations and financing through program evaluation reports and legislation sponsored by LFC.
- To provide information to legislators, as requested, in a timely manner.

GOAL 3: Provide oversight of state agencies to ensure effective use of appropriations.

- To provide timely and informative program evaluations to verify the quality of services and effective expenditure of budgets by state agencies.
- To monitor capital outlay projects, regularly monitor SHARE, review budget adjustment requests, review contracts, and assess performance measure data to ensure the timely and effective expenditure of state funds.
- To provide oversight through high-quality reports, hearings, and briefs.

GOAL 4: Maintain an effective, high-quality staff and work environment that results in minimal turnover.

- To provide training and capacity development to develop a creative and innovative staff.
- To provide competitive compensation and a professional work environment.
- To provide quality information technology resources.
- To develop flexible work schedules that meet diverse employee needs.

GOAL 5: Improve follow-up on program evaluation implementation.

- To determine if expected outcomes are attained.
- To ensure recommendations are implemented.
- To monitor the impact of statutory or regulatory changes.

PERFORMANCE MEASURES

GOAL 1: Annually provide a fiscally sound state budget recommendation that reflects committee priorities and addresses state needs.

- **Output Measure:** Percent of general fund reserve levels in the Legislative Finance Committee budget recommendation

FY21 Actual = 35.4%

FY22 Actual = 49.3%

FY23 Actual= 48%

FY24 Target = 30%

FY24 Prelim=33%

FY25 Prelim=31.6%

- **Outcome Measure:** Eighteen-month general fund revenue forecast variance from actual revenues

FY21 Actual = 2.7%

FY22 Actual = 20.7%

FY23 Actual= 29.6%

FY24 Actual= 9.4%

FY25 Target = 5%

FY25 Prelim= 4.4%

- **Outcome Measure:** Adequacy of base operating budgets for state agencies
(% = Total supplemental appropriations divided by total current year operating budgets.)

FY20 Actual = 0.4%

FY21 Actual = 0.4%

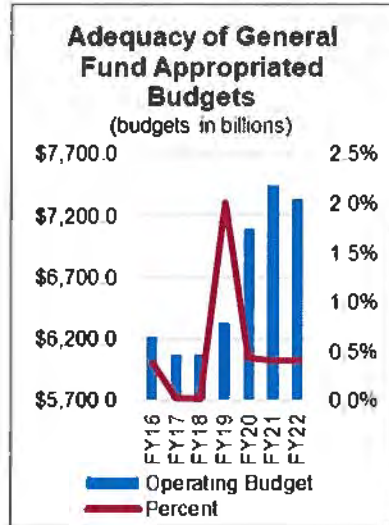
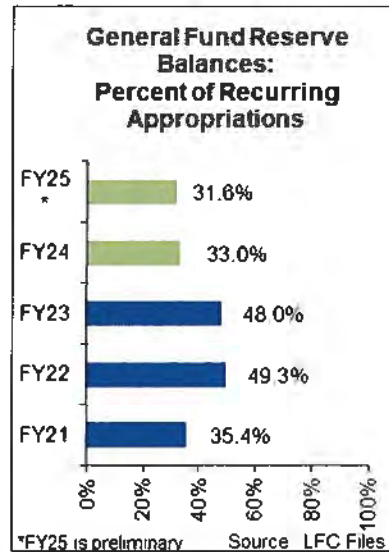
FY22 Actual = 0.4%

FY23 Actual = <.5%

FY24 Actual = <.5%

FY25 Actual = <.5%

FY26 Target = <.5%



GOAL 2: Facilitate well-informed policy decisions through objective analysis.

- **Output Measure:** Percent of fiscal impact reports completed (not including memorials)

FY 22 Target = 92%

FY22 Actual = 77%

FY23 Target = 92%

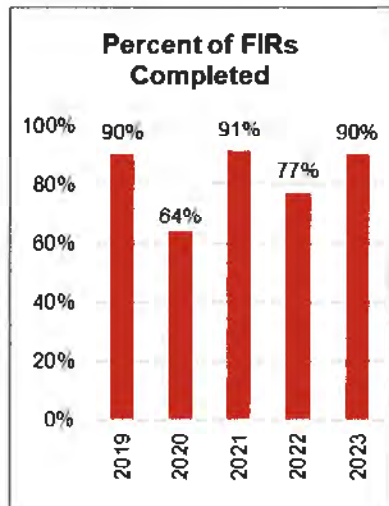
FY23 Actual = 90%

FY24 Actual = 90%

FY25 Actual = 90%

FY26 Target = 90%

*Beginning in 2017, FIRs on memorials recognizing individuals are not prioritized for completion.



GOAL 3: Provide oversight of state agencies to ensure effective use of appropriations.

- Outcome Measure:** Percent of capital outlay projects over \$1 million on schedule (rated green)

FY21 Actual = 62%

FY22 Actual = 57%

FY23 Actual = 55%

FY24 Actual = 50%

FY25 Actual = 51%

FY26 Target = 60%
- Explanatory Measure:** Amount of cost savings identified in program evaluation recommendations in the past five years

FY22 Actual = \$1.3 billion

FY23 Target = \$260 million

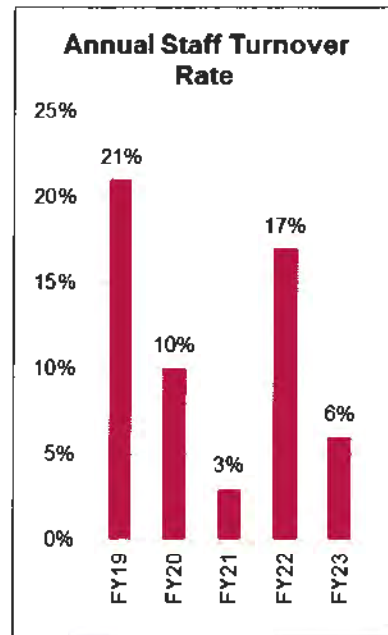
FY23 Actual = \$1.8 billion

FY24 Target = \$260 million

FY24 Actual = \$3.2 billion

FY25 Target = \$260 million

FY25 Actual = \$2.6 billion



GOAL 4: Maintain an effective, high-quality staff and work environment that results in minimal turnover.

- Outcome Measure:** Annual turnover rate of committee staff

FY22 Target = 15%

FY22 Actual = 17%

FY23 Target = 15%

FY23 Actual = 6%

FY24 Actual = 20%

FY25 Actual = 13%

FY26 Target = 15%
- Explanatory Measure:** Percent of professional staff with graduate-level education

FY21 Actual = 81%

FY22 Target = 82%

FY22 Actual = 83%

FY23 Target = 82%

FY24 Actual = 83%

FY25 Actual = 73%

FY26 Target = 75%
- Explanatory Measure:** Percent of work products jointly authored by evaluator and analysts.

FY22 Target = 90%

FY22 Actual = 98%

FY23 Target = 90%

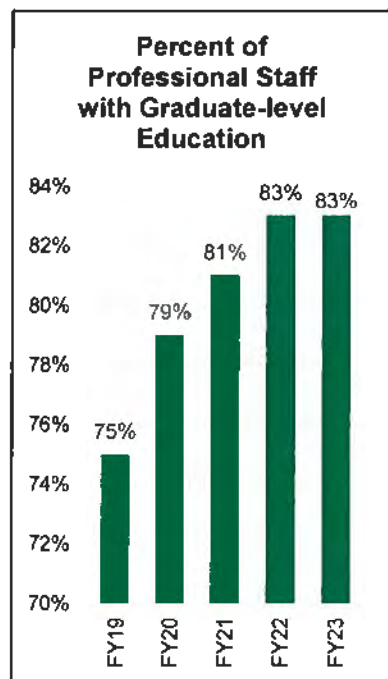
FY23 Actual = 95%

FY24 Target = 90%

FY24 Actual = 98%

FY25 Target = 90%

FY25 Actual = 98%



PRIOR-YEAR ACCOMPLISHMENTS

- Collaborated with executive agencies and community representatives to substantially expand access to cradle to career programs including child care, home visits, prekindergarten, extended learning time in schools, expanded financial aid for higher education and workforce training.
- Examined behavioral and physical health provider access and expanded investments in Medicaid provider rates.
- Expanded investments for child welfare including resources to fill hundreds of existing and new social worker positions and funding for evidence-based programs to modernize the system.
- Expanded investments in evidence-based programs in behavioral health, child welfare, and early childhood initiatives.
- Improved compensation for public education and state government workers to keep salaries competitive and help with recruitment and retention of quality public servants.
- Guided legislators through statewide capital outlay recommendations mostly developed by Legislature.
- Prioritized nonrecurring spending to major investments in transportation, law enforcement, housing economic development, healthcare, water and natural resources, and higher education.
- Worked collaboratively with legislators and the executive to formulate a balanced budget for 2023 regular session
- Prepared timely fiscal impact reports through staff analysis.
- Focused LFC evaluations on timely topics, including the Medicaid network adequacy, housing supports, state facility utilization, education, and child welfare.
- Initiated Performance Academy in collaboration with Department of Finance and Administration.
- Refined LegisStat hearing format to improve accountability and program efficiency and target appropriations to programs that work.

STAFF RECOGNITION

Awards and Fellowships:

- NLPES Certificate of Impact for Evaluation 2025—*State Funded Water Projects* Clayton Lobaugh and Rhea Serna
- NLPES Certificate of Impact for Evaluation 2024—*Implementation and Outcomes of the Comprehensive Addiction and Recovery Act*, Ryan Tolman, Nathan Eckberg, and Clayton Lobaugh
- Results for America and MIT’s JPAL, Lever Training Sprint Fellowship – Jon Courtney, Sarah Dinces, Ryan Tolman, and Eric Chenier
- 2025 NCSL Legislative Staff Management Institute – Jennifer Faubion
- 2025 Harvard Kennedy School Senior Executives in State and Local Government – Joey Simon and Sarah Dinces
- 2024 Harvard Kennedy School Senior Executives in State and Local Government – Ismael Torres, Connor Jorgensen
- 2023 NCSL Education Finance Fellows – Sunny Liu

External Speeches and Testimony:

- Presentation to Interim Committees – Charles Sallee, Jon Courtney, Kelly Klundt, Rachel Garcia, Brendon Grey, Sunny Liu, Eric Chenier, Cally Carswell, Austin Davidson, Julisa Rodriguez, Joseph Simon, Ismael Torres, Jennifer Faubion, Allegra Hernandez, Harry Rommell, Emily Hilla, Ruby Ann Esquibel, Matt Goodlaw, John Valdez, Maggie Klug, Clayton Lobaugh, Sarah Rovang, Ryan Tolman
- NM Tax Research Institute – Charles Sallee
- Council of University Presidents and Two-Year Colleges Associations, legislative preview and annual and quarterly meeting – Charles Sallee
- Albuquerque Chamber of Commerce – Charles Sallee
- Leadership New Mexico – Charles Sallee
- NM School Boards Association – Charles Sallee
- NM Superintendents Association – Charles Sallee
- Santa Fe Women’s Club – Charles Sallee
- NM Association of Counties – Charles Sallee
- Washington DC, Budget Office – Charles Sallee
- NASBO – Charles Sallee
- NCSL National Association of Legislative Fiscal Offices – Charles Sallee
- New Mexico Early Childhood Prenatal-3 Steering Committee– Kelly Klundt
- Legislative Early Childhood Caucus – Kelly Klundt
- NCSL Opioid Policy Fellowship–Kelly Klundt
- New Mexico Association of School Business Officials Spring Budget Workshop – Sunny Liu
- Education Partnership of the Permian Basin – Charles Sallee, Sunny Liu

- LESC Funding Formula Workgroup – Charles Sallee, Sunny Liu
- Indian Education Advisory Council – Charles Sallee, Sunny Liu
- New Mexico Evaluation Society – Ryan Tolman, Sarah Dinces, Clayton Lobaugh

**Leadership
Positions Held:**

- New Mexico Public School Capital Outlay Council – Charles Sallee
- National Legislative Program Evaluation Society Executive Committee –Board Member Sarah Dinces
- University of New Mexico Master of Public Policy Community Advisory Board - Member, Jon Courtney
- National Conference of State Legislatures Staff Coordinating Committee – Jon Courtney
National Conference of State Legislature Executive Committee - Jon Courtney
- Legislative Education Staff Network Steering Committee 2023 Chair – Sunny Liu
- Higher Education Capital Outlay Committee – Cally Carswell
- Senate Memorial 5 Taskforce Coordination—Rachel Garcia

Memberships:

- National Conference of State Legislatures
 - Budget and Revenue Committee
 - Law and Criminal Justice and Public Safety
 - Legislative Staff Coordinating Committee
 - Information and Communication
 - Doula Symposium
 - Health and Human Services
- National Association of Legislative Fiscal Officers
- National Legislative Program Evaluation Society
- Legislative Education Staff Network
- Education Commission of the States
- Western States Legislative Fiscal Officers Association
- American Society for Public Administration
- Association of Government Accountants
- Government Finance Officers Association
- Institute of Internal Auditors
- Institute of Internal Controls
- Association of Education Finance and Policy
- New Mexico Higher Education Formula Technical Committee
- New Mexico Home Visiting Collaborative
- American Evaluation Association
- New Mexico Evaluators
- State and Local Tax Working Group