



Iris K. Romero | Executive Director
Ryan Parks | Deputy Director of Capital Operations
Larry Tillotson | Deputy Director of Operations & Outreach

(505) 843-6272
<https://www.nmpsfa.org/>

September 3, 2024

Department of Finance and Administration
State Budget Division
Attn: Simon Miller, Principal Analyst
407 Galisteo Street Room 190
Santa Fe, NM 87501

Dear Mr. Miller:

Enclosed is Public School Facilities Authority (PSFA) fiscal year (FY) 2026 budget request. This request is a total of \$7,894,228 with an increase of \$483,228 from the FY25 operating budget. Pursuant to NMSA 22-24-4, PSFA's operating budget is based on total annual expenditures from the fund for the core administrative functions not to exceed five percent of the average annual grant assistance authorized from the fund during the five previous fiscal years. Based on the latest calculation, PSFA is authorized to request up to \$11.6M for FY26. The agency wants to create a solid foundation in current personnel and procedures in order to prepare for the next phase of funding.

200s Personal Services & Employee Benefits: The total personal services and employee benefits (PS & EB) requested is \$6,396,328. The request is part of a performance based compensation strategy in order to create a strong human capital foundation in order to prepare for the influx of second phase construction projects coming forward for an award. Additionally, this strategy is also geared to create mentors for new employees, as well as create a growth and advancement strategy that will help retain staff and reduce turnover. PSFA is also requesting 2 additional positions to include one Regional Manager and one Energy Manager with an approximate total of \$215,223, which also includes the benefits package.

300s Contractual Services: PSFA is also requesting an increase of \$25,000 from the FY25 for a FY26 request of \$225,000. The increase is for professional services to perform various consulting services to include development and editing of public documents and materials such as the annual report and the published Public School Capital Outlay (PSCOC) meeting materials, website redesign, and potential consultant for the continued discussion pertaining to the State/Local Match funding formula analysis.

400s Other: PSFA is requesting a flat budget of \$1,272,900.

If you have any questions please don't hesitate to contact Iris K. Romero at 505-358-2766 or ir Romero@nmpsfa.org.

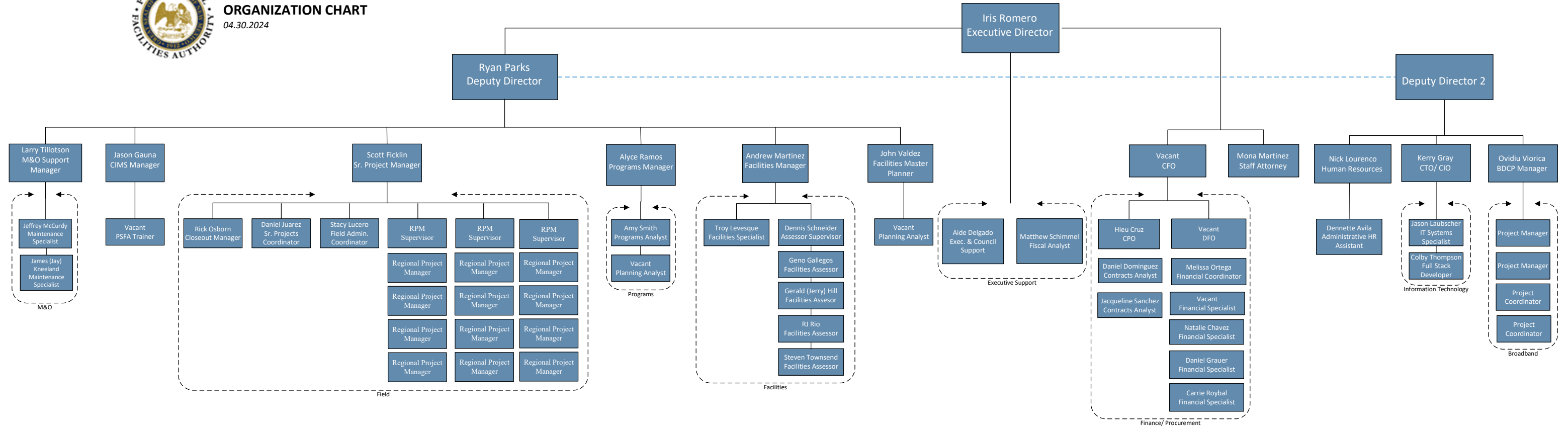
Sincerely,

Iris K. Romero
Executive Director / Chief Financial Officer

CC: Cally Carswell, Senior Fiscal Analyst, Legislative Finance Committee



PUBLIC SCHOOL FACILITIES AUTHORITY
ORGANIZATION CHART
04.30.2024



S-8 Financial Summary

(Dollars in Thousands)

BU **PCode** **Department**
 94000 0000 0000000000

	2023-24 Opbud	2023-24 Actuals	2024-25 Opbud	2025-26 PCF Proj	Base	----- FY 2026 Agency Request -----		Total
						Expansion		
REVENUE								
112 Other Transfers	0.0	6,364.9	7,411.0	0.0	7,894.2	0.0		7,894.2
130 Other Revenues	7,186.2	0.0	0.0	0.0	0.0	0.0		0.0
REVENUE, TRANSFERS	7,186.2	6,364.9	7,411.0	0	7,894.2	0.0		7,894.2
REVENUE	7,186.2	6,364.9	7,411.0	0	7,894.2	0.0		7,894.2
EXPENSE								
200 Personal Services and Employee Benefits	5,763.3	5,553.9	5,938.1	6,238.6	6,396.3	0.0		6,396.3
300 Contractual services	150.0	141.7	200.0	0.0	225.0	0.0		225.0
400 Other	1,272.9	669.3	1,272.9	0.0	1,272.9	0.0		1,272.9
EXPENDITURES	7,186.2	6,364.9	7,411.0	6,238.56	7,894.2	0.0		7,894.2
EXPENSE	7,186.2	6,364.9	7,411.0	6,238.56	7,894.2	0.0		7,894.2
FTE POSITIONS								
810 Permanent	55.00	58.00	55.00	58.00	58.00	0.00		58.00
830 Temporary	1.00	0.00	1.00	0.00	0.00	0.00		0.00
FTEs	56.00	58.00	56.00	58.00	58.00	0.00		58.00
FTE POSITIONS	56.00	58.00	56.00	58.00	58.00	0.00		58.00

State of New Mexico
S-8 Financial Summary
 (Dollars in Thousands)

BU PCode Department
 94000 P940 000000

	2023-24 Opbud	2023-24 Actuals	2024-25 Opbud	2025-26 PCF Proj	Base	----- FY 2026 Agency Request ----- Expansion	Total
REVENUE							
112 Other Transfers	0.0	6,364.9	7,411.0	0.0	7,894.2	0.0	7,894.2
130 Other Revenues	7,186.2	0.0	0.0	0.0	0.0	0.0	0.0
REVENUE, TRANSFERS	7,186.2	6,364.9	7,411.0	0.0	7,894.2	0.0	7,894.2
REVENUE	7,186.2	6,364.9	7,411.0	0.0	7,894.2	0.0	7,894.2
EXPENSE							
200 Personal Services and Employee Benefits	5,763.3	5,553.9	5,938.1	6,238.6	6,396.3	0.0	6,396.3
300 Contractual services	150.0	141.7	200.0	0.0	225.0	0.0	225.0
400 Other	1,272.9	669.3	1,272.9	0.0	1,272.9	0.0	1,272.9
EXPENDITURES	7,186.2	6,364.9	7,411.0	6,238.56	7,894.2	0.0	7,894.2
EXPENSE	7,186.2	6,364.9	7,411.0	6,238.56	7,894.2	0.0	7,894.2
FTE POSITIONS							
810 Permanent	55.00	58.00	55.00	58.00	58.00	0.00	58.00
830 Temporary	1.00	0.00	1.00	0.00	0.00	0.00	0.00
FTEs	56.00	58.00	56.00	58.00	58.00	0.00	58.00
FTE POSITIONS	56.00	58.00	56.00	58.00	58.00	0.00	58.00

BU PCode Department
94000 0000 0000000000

S-9 Account Code Revenue/Expenditure Summary
(Dollars in Thousands)

		2023-24	2023-24	2024-25	2025-26	----- FY 2026 Agency Request -----		
		Opbud	Actuals	Opbud	PCF Proj	Base	Expansion	Total
499906	OFS - INTRA-Agency	0.0	6,364.9	7,411.0	0.0	7,894.2	0.0	7,894.2
112	Other Transfers	0.0	6,364.9	7,411.0	0.0	7,894.2	0.0	7,894.2
491105	Bond Proceeds	7,186.2	0.0	0.0	0.0	0.0	0.0	0.0
496901	Miscellaneous Revenue	0.0	0.0	0.0	0.0	0.0	0.0	0.0
130	Other Revenues	7,186.2	0.0	0.0	0.0	0.0	0.0	0.0
TOTAL REVENUE		7,186.2	6,364.9	7,411.0	0	7,894.2	0.0	7,894.2
520100	Exempt Perm Positions P/T&F/T	4,188.0	3,968.4	4,341.0	4,572.0	4,658.5	0.0	4,658.5
520300	Classified Perm Positions F/T	0.0	9.3	0.0	0.0	0.0	0.0	0.0
520500	Temporary Positions F/T & P/T	0.0	2.9	0.0	0.0	0.0	0.0	0.0
520600	Paid Unused Sick Leave	0.0	12.0	0.0	0.0	0.0	0.0	0.0
520800	Annl & Comp Paid At Separation	0.2	55.4	0.2	0.0	0.0	0.0	0.0
521100	Group Insurance Premium	336.8	345.2	358.6	401.1	342.1	0.0	342.1
521200	Retirement Contributions	801.8	764.9	801.8	887.3	855.3	0.0	855.3
521300	F I C A	326.7	293.4	326.7	282.4	340.1	0.0	340.1
521400	Workers' Comp Assessment Fee	0.5	0.5	0.5	0.0	0.5	0.0	0.5
521410	GSD Work Comp Insur Premium	3.1	3.1	3.1	0.0	3.3	0.0	3.3
521500	Unemployment Comp Premium	10.1	10.1	10.1	0.0	6.3	0.0	6.3
521600	Employee Liability Ins Premium	10.6	9.3	10.6	0.0	101.3	0.0	101.3
521700	RHC Act Contributions	85.5	79.6	85.5	95.7	88.9	0.0	88.9
200	Personal Services and Employee Bene	5,763.3	5,553.9	5,938.1	6,238.6	6,396.3	0.0	6,396.3
535200	Professional Services	30.8	79.9	91.2	0.0	116.2	0.0	116.2
535300	Other Services	51.3	9.0	10.0	0.0	10.0	0.0	10.0
535400	Audit Services	23.8	22.8	41.8	0.0	41.8	0.0	41.8
535500	Attorney Services	7.1	9.9	20.0	0.0	20.0	0.0	20.0
535600	IT Services	37.0	20.1	37.0	0.0	37.0	0.0	37.0
300	Contractual services	150.0	141.7	200.0	0.0	225.0	0.0	225.0
542100	Employee I/S Mileage & Fares	2.0	0.0	2.0	0.0	2.0	0.0	2.0
542200	Employee I/S Meals & Lodging	8.5	6.9	8.5	0.0	8.5	0.0	8.5
542500	Transp - Fuel & Oil	25.4	14.2	25.4	0.0	25.4	0.0	25.4
542600	Transp - Parts & Supplies	1.3	1.0	1.3	0.0	1.3	0.0	1.3
542700	Transp - Transp Insurance	2.2	3.3	2.2	0.0	2.2	0.0	2.2
542800	State Transp Pool Charges	89.3	82.6	89.3	0.0	89.3	0.0	89.3
542900	Transp - Other Travel	0.0	0.0	0.0	0.0	0.0	0.0	0.0

BU PCode Department
94000 0000 0000000000

S-9 Account Code Revenue/Expenditure Summary
(Dollars in Thousands)

		2023-24	2023-24	2024-25	2025-26	----- FY 2026 Agency Request -----		
		Opbud	Actuals	Opbud	PCF Proj	Base	Expansion	Total
543200	Maint - Furn, Fixt, Equipment	0.0	0.0	0.0	0.0	0.0	0.0	0.0
543300	Maint - Buildings & Structures	1.5	0.5	1.5	0.0	1.5	0.0	1.5
543400	Maint - Property Insurance	0.1	0.0	0.1	0.0	0.1	0.0	0.1
543820	Maintenance IT	0.0	3.5	0.0	0.0	0.0	0.0	0.0
543830	IT HW/SW Agreements	500.0	107.7	500.0	0.0	500.0	0.0	500.0
544000	Supply Inventory IT	120.0	1.6	120.0	0.0	120.0	0.0	120.0
544100	Supplies-Office Supplies	20.0	8.6	20.0	0.0	20.0	0.0	20.0
544500	Supplies-Food	0.2	0.0	0.2	0.0	0.2	0.0	0.2
544900	Supplies-Inventory Exempt	6.0	16.1	6.0	0.0	6.0	0.0	6.0
545600	Reporting & Recording	0.1	0.0	0.1	0.0	0.1	0.0	0.1
545609	Report/Record Inter St Agency	0.0	0.1	0.0	0.0	0.0	0.0	0.0
545710	DOIT HCM Assessment Fees	18.4	0.0	18.4	0.0	17.4	0.0	17.4
545900	Printing & Photo Services	3.0	7.3	3.0	0.0	3.0	0.0	3.0
546100	Postage & Mail Services	5.0	0.1	5.0	0.0	5.0	0.0	5.0
546310	Utilities - Sewer/Garbage	0.2	0.1	0.2	0.0	0.2	0.0	0.2
546330	Utilities - Water	0.5	0.2	0.5	0.0	0.5	0.0	0.5
546400	Rent Of Land & Buildings	244.4	230.2	244.4	0.0	244.4	0.0	244.4
546500	Rent Of Equipment	35.0	35.6	35.0	0.0	35.0	0.0	35.0
546600	Communications	84.0	97.9	84.0	0.0	84.0	0.0	84.0
546610	DOIT Telecommunications	0.7	18.0	0.7	0.0	0.7	0.0	0.7
546700	Subscriptions/Dues/License Fee	10.6	7.6	10.6	0.0	10.6	0.0	10.6
546800	Employee Training & Education	11.0	6.8	11.0	0.0	11.0	0.0	11.0
546900	Advertising	4.5	7.5	4.5	0.0	4.5	0.0	4.5
547900	Miscellaneous Expense	4.0	3.5	4.0	0.0	4.0	0.0	4.0
547999	Request to Pay Prior Year	0.0	7.0	0.0	0.0	0.0	0.0	0.0
548300	Information Tech Equipment	75.0	0.0	75.0	0.0	75.0	0.0	75.0
549600	Employee O/S Mileage & Fares	0.0	0.4	0.0	0.0	0.0	0.0	0.0
549700	Employee O/S Meals & Lodging	0.0	0.9	0.0	0.0	1.0	0.0	1.0
400	Other	1,272.9	669.3	1,272.9	0.0	1,272.9	0.0	1,272.9
TOTAL EXPENSE		7,186.2	6,364.9	7,411.0	6,238.56	7,894.2	0.0	7,894.2
810	Permanent	55.00	58.00	55.00	58.00	58.00	0.00	58.00
810	Permanent	55.00	58.00	55.00	58.00	58.00	0.00	58.00
830	Temporary	1.00	0.00	1.00	0.00	0.00	0.00	0.00

BU **PCode** **Department**
94000 0000 0000000000

S-9 Account Code Revenue/Expenditure Summary
(Dollars in Thousands)

830	Temporary	1.00	0.00	1.00	0.00	0.00	0.00	0.00
TOTAL FTE POSITIONS		56.00	58.00	56.00	58.00	0.00	0.00	58.00

Public School Facilities

State of New Mexico

BU PCode Department
94000 P940 000000

S-9 Account Code Revenue/Expenditure Summary
(Dollars in Thousands)

		2023-24	2023-24	2024-25	2025-26	----- FY 2026 Agency Request -----		
		Opbud	Actuals	Opbud	PCF Proj	Base	Expansion	Total
499906	OFS - INTRA-Agency	0.0	6,364.9	7,411.0	0.0	7,894.2	0.0	7,894.2
112	Other Transfers	0.0	6,364.9	7,411.0	0.0	7,894.2	0.0	7,894.2
491105	Bond Proceeds	7,186.2	0.0	0.0	0.0	0.0	0.0	0.0
496901	Miscellaneous Revenue	0.0	0.0	0.0	0.0	0.0	0.0	0.0
130	Other Revenues	7,186.2	0.0	0.0	0.0	0.0	0.0	0.0
TOTAL REVENUE		7,186.2	6,364.9	7,411.0	0.0	7,894.2	0.0	7,894.2
520100	Exempt Perm Positions P/T&F/T	4,188.0	3,968.4	4,341.0	4,572.0	4,658.5	0.0	4,658.5
520300	Classified Perm Positions F/T	0.0	9.3	0.0	0.0	0.0	0.0	0.0
520500	Temporary Positions F/T & P/T	0.0	2.9	0.0	0.0	0.0	0.0	0.0
520600	Paid Unused Sick Leave	0.0	12.0	0.0	0.0	0.0	0.0	0.0
520800	Annl & Comp Paid At Separation	0.2	55.4	0.2	0.0	0.0	0.0	0.0
521100	Group Insurance Premium	336.8	345.2	358.6	401.1	342.1	0.0	342.1
521200	Retirement Contributions	801.8	764.9	801.8	887.3	855.3	0.0	855.3
521300	F I C A	326.7	293.4	326.7	282.4	340.1	0.0	340.1
521400	Workers' Comp Assessment Fee	0.5	0.5	0.5	0.0	0.5	0.0	0.5
521410	GSD Work Comp Insur Premium	3.1	3.1	3.1	0.0	3.3	0.0	3.3
521500	Unemployment Comp Premium	10.1	10.1	10.1	0.0	6.3	0.0	6.3
521600	Employee Liability Ins Premium	10.6	9.3	10.6	0.0	101.3	0.0	101.3
521700	RHC Act Contributions	85.5	79.6	85.5	95.7	88.9	0.0	88.9
200	Personal Services and Employee Bene	5,763.3	5,553.9	5,938.1	6,238.6	6,396.3	0.0	6,396.3
535200	Professional Services	30.8	79.9	91.2	0.0	116.2	0.0	116.2
535300	Other Services	51.3	9.0	10.0	0.0	10.0	0.0	10.0
535400	Audit Services	23.8	22.8	41.8	0.0	41.8	0.0	41.8
535500	Attorney Services	7.1	9.9	20.0	0.0	20.0	0.0	20.0
535600	IT Services	37.0	20.1	37.0	0.0	37.0	0.0	37.0
300	Contractual services	150.0	141.7	200.0	0.0	225.0	0.0	225.0
542100	Employee I/S Mileage & Fares	2.0	0.0	2.0	0.0	2.0	0.0	2.0
542200	Employee I/S Meals & Lodging	8.5	6.9	8.5	0.0	8.5	0.0	8.5
542500	Transp - Fuel & Oil	25.4	14.2	25.4	0.0	25.4	0.0	25.4
542600	Transp - Parts & Supplies	1.3	1.0	1.3	0.0	1.3	0.0	1.3
542700	Transp - Transp Insurance	2.2	3.3	2.2	0.0	2.2	0.0	2.2
542800	State Transp Pool Charges	89.3	82.6	89.3	0.0	89.3	0.0	89.3
542900	Transp - Other Travel	0.0	0.0	0.0	0.0	0.0	0.0	0.0

Public School Facilities

State of New Mexico

BU PCode Department
94000 P940 000000

S-9 Account Code Revenue/Expenditure Summary
(Dollars in Thousands)

		2023-24	2023-24	2024-25	2025-26	----- FY 2026 Agency Request -----		
		Opbud	Actuals	Opbud	PCF Proj	Base	Expansion	Total
543200	Maint - Furn, Fixt, Equipment	0.0	0.0	0.0	0.0	0.0	0.0	0.0
543300	Maint - Buildings & Structures	1.5	0.5	1.5	0.0	1.5	0.0	1.5
543400	Maint - Property Insurance	0.1	0.0	0.1	0.0	0.1	0.0	0.1
543820	Maintenance IT	0.0	3.5	0.0	0.0	0.0	0.0	0.0
543830	IT HW/SW Agreements	500.0	107.7	500.0	0.0	500.0	0.0	500.0
544000	Supply Inventory IT	120.0	1.6	120.0	0.0	120.0	0.0	120.0
544100	Supplies-Office Supplies	20.0	8.6	20.0	0.0	20.0	0.0	20.0
544500	Supplies-Food	0.2	0.0	0.2	0.0	0.2	0.0	0.2
544900	Supplies-Inventory Exempt	6.0	16.1	6.0	0.0	6.0	0.0	6.0
545600	Reporting & Recording	0.1	0.0	0.1	0.0	0.1	0.0	0.1
545609	Report/Record Inter St Agency	0.0	0.1	0.0	0.0	0.0	0.0	0.0
545710	DOIT HCM Assessment Fees	18.4	0.0	18.4	0.0	17.4	0.0	17.4
545900	Printing & Photo Services	3.0	7.3	3.0	0.0	3.0	0.0	3.0
546100	Postage & Mail Services	5.0	0.1	5.0	0.0	5.0	0.0	5.0
546310	Utilities - Sewer/Garbage	0.2	0.1	0.2	0.0	0.2	0.0	0.2
546330	Utilities - Water	0.5	0.2	0.5	0.0	0.5	0.0	0.5
546400	Rent Of Land & Buildings	244.4	230.2	244.4	0.0	244.4	0.0	244.4
546500	Rent Of Equipment	35.0	35.6	35.0	0.0	35.0	0.0	35.0
546600	Communications	84.0	97.9	84.0	0.0	84.0	0.0	84.0
546610	DOIT Telecommunications	0.7	18.0	0.7	0.0	0.7	0.0	0.7
546700	Subscriptions/Dues/License Fee	10.6	7.6	10.6	0.0	10.6	0.0	10.6
546800	Employee Training & Education	11.0	6.8	11.0	0.0	11.0	0.0	11.0
546900	Advertising	4.5	7.5	4.5	0.0	4.5	0.0	4.5
547900	Miscellaneous Expense	4.0	3.5	4.0	0.0	4.0	0.0	4.0
547999	Request to Pay Prior Year	0.0	7.0	0.0	0.0	0.0	0.0	0.0
548300	Information Tech Equipment	75.0	0.0	75.0	0.0	75.0	0.0	75.0
549600	Employee O/S Mileage & Fares	0.0	0.4	0.0	0.0	0.0	0.0	0.0
549700	Employee O/S Meals & Lodging	0.0	0.9	0.0	0.0	1.0	0.0	1.0
400	Other	1,272.9	669.3	1,272.9	0.0	1,272.9	0.0	1,272.9
TOTAL EXPENSE		7,186.2	6,364.9	7,411.0	6,238.6	7,894.2	0.0	7,894.2
810	Permanent	55.00	58.00	55.00	58.00	58.00	0.00	58.00
810	Permanent	55.00	58.00	55.00	58.00	58.00	0.00	58.00
830	Temporary	1.00	0.00	1.00	0.00	0.00	0.00	0.00
830	Temporary	1.00	0.00	1.00	0.00	0.00	0.00	0.00

Public School Facilities

State of New Mexico

BU **PCode** **Department**
94000 P940 000000

S-9 Account Code Revenue/Expenditure Summary
(Dollars in Thousands)

TOTAL FTE POSITIONS	56.00	58.00	56.00	58.00	58.00	0.00	58.00
---------------------	-------	-------	-------	-------	-------	------	-------

BU PCode Department
 94000 0000 000000000

S-9 Account Code Revenue Summary
 (Dollars in Thousands)

	Provider PCode	2023-24 Opbud	2023-24 Actuals	2024-25 Opbud	2025-26 PCF Proj	----- FY 2026 Agency Request -----		
						Base	Expansion	Total
499906	OFS - INTRA-Agency	0.0	6,364.9	0.0	0.0	7,894.2	0.0	7,894.2
112	Other Transfers	0.0	6,364.9	7,411.0	0.0	7,894.2	0.0	7,894.2
491105	Bond Proceeds	7,186.2	0.0	0.0	0.0	0.0	0.0	0.0
496901	Miscellaneous Revenue	0.0	0.0	0.0	0.0	0.0	0.0	0.0
130	Other Revenues	7,186.2	0.0	0.0	0.0	0.0	0.0	0.0
TOTAL REVENUE		7,186.2	6,364.9	7,411.0	0	7,894.2	0.0	7,894.2

Public School Facilities

BU PCode Department
 94000 P940 000000

State of New Mexico

S-9 Account Code Revenue Summary
 (Dollars in Thousands)

	Provider PCode	2023-24 Opbud	2023-24 Actuals	2024-25 Opbud	2025-26 PCF Proj	----- FY 2026 Agency Request -----		
						Base	Expansion	Total
499906	OFS - INTRA-Agency	0.0	6,364.9	7,411.0	0.0	7,894.2	0.0	7,894.2
112	Other Transfers	0.0	6,364.9	7,411.0	0.0	7,894.2	0.0	7,894.2
491105	Bond Proceeds	7,186.2	0.0	0.0	0.0	0.0	0.0	0.0
496901	Miscellaneous Revenue	0.0	0.0	0.0	0.0	0.0	0.0	0.0
130	Other Revenues	7,186.2	0.0	0.0	0.0	0.0	0.0	0.0
TOTAL REVENUE		7,186.2	6,364.9	7,411.0	0.0	7,894.2	0.0	7,894.2

BU PCode Department
 94000 0000 0000000000

S-9 Account Code Expenditure Summary
 (Dollars in Thousands)

		2023-24	2023-24	2024-25	2025-26	----- FY 2026 Agency Request -----		
		Opbud	Actuals	Opbud	PCF Proj	Base	Expansion	Total
520100	Exempt Perm Positions P/T&F/T	4,188.0	3,968.4	4,341.0	4,572.0	4,658.5	0.0	4,658.5
520300	Classified Perm Positions F/T	0.0	9.3	0.0	0.0	0.0	0.0	0.0
520500	Temporary Positions F/T & P/T	0.0	2.9	0.0	0.0	0.0	0.0	0.0
520600	Paid Unused Sick Leave	0.0	12.0	0.0	0.0	0.0	0.0	0.0
520800	Annl & Comp Paid At Separation	0.2	55.4	0.2	0.0	0.0	0.0	0.0
521100	Group Insurance Premium	336.8	345.2	358.6	401.1	342.1	0.0	342.1
521200	Retirement Contributions	801.8	764.9	801.8	887.3	855.3	0.0	855.3
521300	F I C A	326.7	293.4	326.7	282.4	340.1	0.0	340.1
521400	Workers' Comp Assessment Fee	0.5	0.5	0.5	0.0	0.5	0.0	0.5
521410	GSD Work Comp Insur Premium	3.1	3.1	3.1	0.0	3.3	0.0	3.3
521500	Unemployment Comp Premium	10.1	10.1	10.1	0.0	6.3	0.0	6.3
521600	Employee Liability Ins Premium	10.6	9.3	10.6	0.0	101.3	0.0	101.3
521700	RHC Act Contributions	85.5	79.6	85.5	95.7	88.9	0.0	88.9
200	Personal Services and Employee Benefits	5,763.3	5,553.9	5,938.1	6,238.6	6,396.3	0.0	6,396.3
535200	Professional Services	30.8	79.9	91.2	0.0	116.2	0.0	116.2
535300	Other Services	51.3	9.0	10.0	0.0	10.0	0.0	10.0
535400	Audit Services	23.8	22.8	41.8	0.0	41.8	0.0	41.8
535500	Attorney Services	7.1	9.9	20.0	0.0	20.0	0.0	20.0
535600	IT Services	37.0	20.1	37.0	0.0	37.0	0.0	37.0
300	Contractual services	150.0	141.7	200.0	0.0	225.0	0.0	225.0
542100	Employee I/S Mileage & Fares	2.0	0.0	2.0	0.0	2.0	0.0	2.0
542200	Employee I/S Meals & Lodging	8.5	6.9	8.5	0.0	8.5	0.0	8.5
542500	Transp - Fuel & Oil	25.4	14.2	25.4	0.0	25.4	0.0	25.4
542600	Transp - Parts & Supplies	1.3	1.0	1.3	0.0	1.3	0.0	1.3
542700	Transp - Transp Insurance	2.2	3.3	2.2	0.0	2.2	0.0	2.2
542800	State Transp Pool Charges	89.3	82.6	89.3	0.0	89.3	0.0	89.3
542900	Transp - Other Travel	0.0	0.0	0.0	0.0	0.0	0.0	0.0
543200	Maint - Furn, Fixt, Equipment	0.0	0.0	0.0	0.0	0.0	0.0	0.0
543300	Maint - Buildings & Structures	1.5	0.5	1.5	0.0	1.5	0.0	1.5
543400	Maint - Property Insurance	0.1	0.0	0.1	0.0	0.1	0.0	0.1
543820	Maintenance IT	0.0	3.5	0.0	0.0	0.0	0.0	0.0
543830	IT HW/SW Agreements	500.0	107.7	500.0	0.0	500.0	0.0	500.0

BU PCode Department
 94000 0000 0000000000

S-9 Account Code Expenditure Summary
 (Dollars in Thousands)

		2023-24	2023-24	2024-25	2025-26	----- FY 2026 Agency Request -----		
		Opbud	Actuals	Opbud	PCF Proj	Base	Expansion	Total
544000	Supply Inventory IT	120.0	1.6	120.0	0.0	120.0	0.0	120.0
544100	Supplies-Office Supplies	20.0	8.6	20.0	0.0	20.0	0.0	20.0
544500	Supplies-Food	0.2	0.0	0.2	0.0	0.2	0.0	0.2
544900	Supplies-Inventory Exempt	6.0	16.1	6.0	0.0	6.0	0.0	6.0
545600	Reporting & Recording	0.1	0.0	0.1	0.0	0.1	0.0	0.1
545609	Report/Record Inter St Agency	0.0	0.1	0.0	0.0	0.0	0.0	0.0
545710	DOIT HCM Assessment Fees	18.4	0.0	18.4	0.0	17.4	0.0	17.4
545900	Printing & Photo Services	3.0	7.3	3.0	0.0	3.0	0.0	3.0
546100	Postage & Mail Services	5.0	0.1	5.0	0.0	5.0	0.0	5.0
546310	Utilities - Sewer/Garbage	0.2	0.1	0.2	0.0	0.2	0.0	0.2
546330	Utilities - Water	0.5	0.2	0.5	0.0	0.5	0.0	0.5
546400	Rent Of Land & Buildings	244.4	230.2	244.4	0.0	244.4	0.0	244.4
546500	Rent Of Equipment	35.0	35.6	35.0	0.0	35.0	0.0	35.0
546600	Communications	84.0	97.9	84.0	0.0	84.0	0.0	84.0
546610	DOIT Telecommunications	0.7	18.0	0.7	0.0	0.7	0.0	0.7
546700	Subscriptions/Dues/License Fee	10.6	7.6	10.6	0.0	10.6	0.0	10.6
546800	Employee Training & Education	11.0	6.8	11.0	0.0	11.0	0.0	11.0
546900	Advertising	4.5	7.5	4.5	0.0	4.5	0.0	4.5
547900	Miscellaneous Expense	4.0	3.5	4.0	0.0	4.0	0.0	4.0
547999	Request to Pay Prior Year	0.0	7.0	0.0	0.0	0.0	0.0	0.0
548300	Information Tech Equipment	75.0	0.0	75.0	0.0	75.0	0.0	75.0
549600	Employee O/S Mileage & Fares	0.0	0.4	0.0	0.0	0.0	0.0	0.0
549700	Employee O/S Meals & Lodging	0.0	0.9	0.0	0.0	1.0	0.0	1.0
400	Other	1,272.9	669.3	1,272.9	0.0	1,272.9	0.0	1,272.9
TOTAL EXPENSE		7,186.2	6,364.9	7,411.0	6,238.56	7,894.2	0.0	7,894.2

Public School Facilities

BU PCode Department
 94000 P940 000000

State of New Mexico

S-9 Account Code Expenditure Summary
 (Dollars in Thousands)

		2023-24	2023-24	2024-25	2025-26	----- FY 2026 Agency Request -----		
		Opbud	Actuals	Opbud	PCF Proj	Base	Expansion	Total
520100	Exempt Perm Positions P/T&F/T	4,188.0	3,968.4	4,341.0	4,572.0	4,658.5	0.0	4,658.5
520300	Classified Perm Positions F/T	0.0	9.3	0.0	0.0	0.0	0.0	0.0
520500	Temporary Positions F/T & P/T	0.0	2.9	0.0	0.0	0.0	0.0	0.0
520600	Paid Unused Sick Leave	0.0	12.0	0.0	0.0	0.0	0.0	0.0
520800	Annl & Comp Paid At Separation	0.2	55.4	0.2	0.0	0.0	0.0	0.0
521100	Group Insurance Premium	336.8	345.2	358.6	401.1	342.1	0.0	342.1
521200	Retirement Contributions	801.8	764.9	801.8	887.3	855.3	0.0	855.3
521300	F I C A	326.7	293.4	326.7	282.4	340.1	0.0	340.1
521400	Workers' Comp Assessment Fee	0.5	0.5	0.5	0.0	0.5	0.0	0.5
521410	GSD Work Comp Insur Premium	3.1	3.1	3.1	0.0	3.3	0.0	3.3
521500	Unemployment Comp Premium	10.1	10.1	10.1	0.0	6.3	0.0	6.3
521600	Employee Liability Ins Premium	10.6	9.3	10.6	0.0	101.3	0.0	101.3
521700	RHC Act Contributions	85.5	79.6	85.5	95.7	88.9	0.0	88.9
200	Personal Services and Employee	5,763.3	5,553.9	5,938.1	6,238.6	6,396.3	0.0	6,396.3
535200	Professional Services	30.8	79.9	91.2	0.0	116.2	0.0	116.2
535300	Other Services	51.3	9.0	10.0	0.0	10.0	0.0	10.0
535400	Audit Services	23.8	22.8	41.8	0.0	41.8	0.0	41.8
535500	Attorney Services	7.1	9.9	20.0	0.0	20.0	0.0	20.0
535600	IT Services	37.0	20.1	37.0	0.0	37.0	0.0	37.0
300	Contractual services	150.0	141.7	200.0	0.0	225.0	0.0	225.0
542100	Employee I/S Mileage & Fares	2.0	0.0	2.0	0.0	2.0	0.0	2.0
542200	Employee I/S Meals & Lodging	8.5	6.9	8.5	0.0	8.5	0.0	8.5
542500	Transp - Fuel & Oil	25.4	14.2	25.4	0.0	25.4	0.0	25.4
542600	Transp - Parts & Supplies	1.3	1.0	1.3	0.0	1.3	0.0	1.3
542700	Transp - Transp Insurance	2.2	3.3	2.2	0.0	2.2	0.0	2.2
542800	State Transp Pool Charges	89.3	82.6	89.3	0.0	89.3	0.0	89.3
542900	Transp - Other Travel	0.0	0.0	0.0	0.0	0.0	0.0	0.0
543200	Maint - Furn, Fixt, Equipment	0.0	0.0	0.0	0.0	0.0	0.0	0.0
543300	Maint - Buildings & Structures	1.5	0.5	1.5	0.0	1.5	0.0	1.5
543400	Maint - Property Insurance	0.1	0.0	0.1	0.0	0.1	0.0	0.1
543820	Maintenance IT	0.0	3.5	0.0	0.0	0.0	0.0	0.0
543830	IT HW/SW Agreements	500.0	107.7	500.0	0.0	500.0	0.0	500.0
544000	Supply Inventory IT	120.0	1.6	120.0	0.0	120.0	0.0	120.0

Public School Facilities

State of New Mexico

BU PCode Department
 94000 P940 000000

S-9 Account Code Expenditure Summary
 (Dollars in Thousands)

		2023-24	2023-24	2024-25	2025-26	----- FY 2026 Agency Request -----		
		Opbud	Actuals	Opbud	PCF Proj	Base	Expansion	Total
544100	Supplies-Office Supplies	20.0	8.6	20.0	0.0	20.0	0.0	20.0
544500	Supplies-Food	0.2	0.0	0.2	0.0	0.2	0.0	0.2
544900	Supplies-Inventory Exempt	6.0	16.1	6.0	0.0	6.0	0.0	6.0
545600	Reporting & Recording	0.1	0.0	0.1	0.0	0.1	0.0	0.1
545609	Report/Record Inter St Agency	0.0	0.1	0.0	0.0	0.0	0.0	0.0
545710	DOIT HCM Assessment Fees	18.4	0.0	18.4	0.0	17.4	0.0	17.4
545900	Printing & Photo Services	3.0	7.3	3.0	0.0	3.0	0.0	3.0
546100	Postage & Mail Services	5.0	0.1	5.0	0.0	5.0	0.0	5.0
546310	Utilities - Sewer/Garbage	0.2	0.1	0.2	0.0	0.2	0.0	0.2
546330	Utilities - Water	0.5	0.2	0.5	0.0	0.5	0.0	0.5
546400	Rent Of Land & Buildings	244.4	230.2	244.4	0.0	244.4	0.0	244.4
546500	Rent Of Equipment	35.0	35.6	35.0	0.0	35.0	0.0	35.0
546600	Communications	84.0	97.9	84.0	0.0	84.0	0.0	84.0
546610	DOIT Telecommunications	0.7	18.0	0.7	0.0	0.7	0.0	0.7
546700	Subscriptions/Dues/License Fee	10.6	7.6	10.6	0.0	10.6	0.0	10.6
546800	Employee Training & Education	11.0	6.8	11.0	0.0	11.0	0.0	11.0
546900	Advertising	4.5	7.5	4.5	0.0	4.5	0.0	4.5
547900	Miscellaneous Expense	4.0	3.5	4.0	0.0	4.0	0.0	4.0
547999	Request to Pay Prior Year	0.0	7.0	0.0	0.0	0.0	0.0	0.0
548300	Information Tech Equipment	75.0	0.0	75.0	0.0	75.0	0.0	75.0
549600	Employee O/S Mileage & Fares	0.0	0.4	0.0	0.0	0.0	0.0	0.0
549700	Employee O/S Meals & Lodging	0.0	0.9	0.0	0.0	1.0	0.0	1.0
400	Other	1,272.9	669.3	1,272.9	0.0	1,272.9	0.0	1,272.9
TOTAL EXPENSE		7,186.2	6,364.9	7,411.0	6,238.56	7,894.2	0.0	7,894.2

Public School Facilities

BU PCode Department
 94000 P940 000000

State of New Mexico

E4/E5 Summary
 (Dollars in Thousands)

		2023-24	2024-25	FY 2026 Agency Request				Total
		Actuals	Opbud	GF	OSF	ISF/IAT	FF	
520100	Exempt Perm Positions P/T&F/T	3,968.4	4,341.0	0.0	0.0	4,658.5	0.0	4,658.5
520300	Classified Perm Positions F/T	9.3	0.0	0.0	0.0	0.0	0.0	0.0
520500	Temporary Positions F/T & P/T	2.9	0.0	0.0	0.0	0.0	0.0	0.0
520600	Paid Unused Sick Leave	12.0	0.0	0.0	0.0	0.0	0.0	0.0
520800	Annl & Comp Paid At Separation	55.4	0.2	0.0	0.0	0.0	0.0	0.0
521100	Group Insurance Premium	345.2	358.6	0.0	0.0	342.1	0.0	342.1
521200	Retirement Contributions	764.9	801.8	0.0	0.0	855.3	0.0	855.3
521300	F I C A	293.4	326.7	0.0	0.0	340.1	0.0	340.1
521400	Workers' Comp Assessment Fee	0.5	0.5	0.0	0.0	0.5	0.0	0.5
521410	GSD Work Comp Insur Premium	3.1	3.1	0.0	0.0	3.3	0.0	3.3
521500	Unemployment Comp Premium	10.1	10.1	0.0	0.0	6.3	0.0	6.3
521600	Employee Liability Ins Premium	9.3	10.6	0.0	0.0	101.3	0.0	101.3
521700	RHC Act Contributions	79.6	85.5	0.0	0.0	88.9	0.0	88.9
200	Personal Services and Employee Bene	5,553.9	5,938.1	0.0	0.0	6,396.3	0.0	6,396.3
535200	Professional Services	79.9	91.2	0.0	0.0	116.2	0.0	116.2
535300	Other Services	9.0	10.0	0.0	0.0	10.0	0.0	10.0
535400	Audit Services	22.8	41.8	0.0	0.0	41.8	0.0	41.8
535500	Attorney Services	9.9	20.0	0.0	0.0	20.0	0.0	20.0
535600	IT Services	20.1	37.0	0.0	0.0	37.0	0.0	37.0
300	Contractual services	141.7	200.0	0.0	0.0	225.0	0.0	225.0
542100	Employee I/S Mileage & Fares	0.0	2.0	0.0	0.0	2.0	0.0	2.0
542200	Employee I/S Meals & Lodging	6.9	8.5	0.0	0.0	8.5	0.0	8.5
542500	Transp - Fuel & Oil	14.2	25.4	0.0	0.0	25.4	0.0	25.4
542600	Transp - Parts & Supplies	1.0	1.3	0.0	0.0	1.3	0.0	1.3
542700	Transp - Transp Insurance	3.3	2.2	0.0	0.0	2.2	0.0	2.2
542800	State Transp Pool Charges	82.6	89.3	0.0	0.0	89.3	0.0	89.3
542900	Transp - Other Travel	0.0	0.0	0.0	0.0	0.0	0.0	0.0
543200	Maint - Furn, Fixt, Equipment	0.0	0.0	0.0	0.0	0.0	0.0	0.0
543300	Maint - Buildings & Structures	0.5	1.5	0.0	0.0	1.5	0.0	1.5
543400	Maint - Property Insurance	0.0	0.1	0.0	0.0	0.1	0.0	0.1
543820	Maintenance IT	3.5	0.0	0.0	0.0	0.0	0.0	0.0
543830	IT HW/SW Agreements	107.7	500.0	0.0	0.0	500.0	0.0	500.0
544000	Supply Inventory IT	1.6	120.0	0.0	0.0	120.0	0.0	120.0

Public School Facilities

BU PCode Department
94000 P940 000000

State of New Mexico

E4/E5 Summary
(Dollars in Thousands)

		2023-24	2024-25	FY 2026 Agency Request				Total
		Actuals	Opbud	GF	OSF	ISF/IAT	FF	
544100	Supplies-Office Supplies	8.6	20.0	0.0	0.0	20.0	0.0	20.0
544500	Supplies-Food	0.0	0.2	0.0	0.0	0.2	0.0	0.2
544900	Supplies-Inventory Exempt	16.1	6.0	0.0	0.0	6.0	0.0	6.0
545600	Reporting & Recording	0.0	0.1	0.0	0.0	0.1	0.0	0.1
545609	Report/Record Inter St Agency	0.1	0.0	0.0	0.0	0.0	0.0	0.0
545710	DOIT HCM Assessment Fees	0.0	18.4	0.0	0.0	17.4	0.0	17.4
545900	Printing & Photo Services	7.3	3.0	0.0	0.0	3.0	0.0	3.0
546100	Postage & Mail Services	0.1	5.0	0.0	0.0	5.0	0.0	5.0
546310	Utilities - Sewer/Garbage	0.1	0.2	0.0	0.0	0.2	0.0	0.2
546330	Utilities - Water	0.2	0.5	0.0	0.0	0.5	0.0	0.5
546400	Rent Of Land & Buildings	230.2	244.4	0.0	0.0	244.4	0.0	244.4
546500	Rent Of Equipment	35.6	35.0	0.0	0.0	35.0	0.0	35.0
546600	Communications	97.9	84.0	0.0	0.0	84.0	0.0	84.0
546610	DOIT Telecommunications	18.0	0.7	0.0	0.0	0.7	0.0	0.7
546700	Subscriptions/Dues/License Fee	7.6	10.6	0.0	0.0	10.6	0.0	10.6
546800	Employee Training & Education	6.8	11.0	0.0	0.0	11.0	0.0	11.0
546900	Advertising	7.5	4.5	0.0	0.0	4.5	0.0	4.5
547900	Miscellaneous Expense	3.5	4.0	0.0	0.0	4.0	0.0	4.0
547999	Request to Pay Prior Year	7.0	0.0	0.0	0.0	0.0	0.0	0.0
548300	Information Tech Equipment	0.0	75.0	0.0	0.0	75.0	0.0	75.0
549600	Employee O/S Mileage & Fares	0.4	0.0	0.0	0.0	0.0	0.0	0.0
549700	Employee O/S Meals & Lodging	0.9	0.0	0.0	0.0	1.0	0.0	1.0
400	Other	669.3	1,272.9	0.0	0.0	1,272.9	0.0	1,272.9
TOTAL EXPENSE		6,364.9	7,411.0	0.0	0.0	7,894.2	0.0	7,894.2

Public School Facilities Authority - Z-Codes

BU PCode Department
94000 Z-CO 000000

State of New Mexico

E4/E5 Summary
(Dollars in Thousands)

		2023-24	2024-25	FY 2026 Agency Request				Total
		Actuals	Opbud	GF	OSF	ISF/IAT	FF	
520100	Exempt Perm Positions P/T&F/T	0.0	0.0	0.0	0.0	0.0	0.0	0.0

Public School Facilities Authority - Z-Codes

State of New Mexico

BU PCode Department
 94000 Z-CO 000000

E4/E5 Summary
 (Dollars in Thousands)

	2023-24 Actuals	2024-25 Opbud	FY 2026 Agency Request				Total
			GF	OSF	ISF/IAT	FF	
521100 Group Insurance Premium	0.0	0.0	0.0	0.0	0.0	0.0	0.0
521200 Retirement Contributions	0.0	0.0	0.0	0.0	0.0	0.0	0.0
521300 F I C A	0.0	0.0	0.0	0.0	0.0	0.0	0.0
521700 RHC Act Contributions	0.0	0.0	0.0	0.0	0.0	0.0	0.0
200 Personal Services and Employee Bene	0.0	0.0	0.0	0.0	0.0	0.0	0.0
TOTAL EXPENSE	0.0	0.0	0.0	0.0	0.0	0.0	0.0

DFA Performance Based Budgeting Data System

Annual Performance Report

Agency: 94000 Public School Facilities Authority

Program: P940 Public School Facilities

The purpose of the public school facilities oversight program is to oversee public school facilities in all eighty-nine school districts, ensuring correct and prudent planning, building and maintenance using state funds and ensuring adequacy of all facilities in accordance with public education department-approved educational programs.

Performance Measures:		2023-24 Target	2023-24 Result	Met Target	Year End Result Narrative
Efficiency	Average number of months from project closeout to financial closeout	0	14	Yes	
Explanatory	Average cost per square foot of new construction	N/A	\$617.00	N/A	Due to COVID, supply chain issues, lack of qualified workforce, low construction wages in NM, building in remote areas and a large amount of commercial projects around the state; PSFA experience a significant increase in GSF costs.
Explanatory	Average megabits per second per student	N/A	1	N/A	
Explanatory	Average number of months between initial award to occupancy	N/A	46	N/A	
Explanatory	Average number of months from initial award to commencement of construction	N/A	32	N/A	
Explanatory	Average square foot per student of elementary schools	N/A	218	N/A	This measure takes into account existing elementary school GSF.
Explanatory	Average square foot per student of high schools	N/A	362	N/A	This measure takes into account existing high schools GSF.
Explanatory	Average square foot per student of middle schools	N/A	260	N/A	This measure takes into account existing middle school GSF.
Explanatory	Average square foot per student of new construction, elementary schools	N/A	196	N/A	
Explanatory	Average square foot per student of new construction, high schools	N/A	N/A	N/A	No new high school construction FY24
Explanatory	Average square foot per student of new construction, middle schools	N/A	141	N/A	
Explanatory	Number of applications received for school facility funding throughout the year	N/A	53	N/A	In FY24, SB131 reduced local matches, which increased the number of applications received. Not all applications resulted in awards due to district inability to support the local match, or district readiness or ineligibility.
Explanatory	Number of awards made for standards, systems, prekindergarten, facility master plans and lease assistance in the fiscal year	N/A	156	N/A	Lease assistance awards are made annually, typically to charter schools. Facility Master Plans are mandatory in order to receive a PSCOC funded award. Standards, systems, prekindergarten awards are based on applications received and awarded by the PSCOC.
Explanatory	Number of change orders in current fiscal year	N/A	33	N/A	
Explanatory	Number of projects awarded by the public schools capital outlay council that are managed by public school facilities authority regional project managers	N/A	160	N/A	Ideally, each RPM should manage an average of 15 projects to provide adequate support for the districts.

DFA Performance Based Budgeting Data System

Annual Performance Report

Program: P940 Public School Facilities

Performance Measures:		2023-24 Target	2023-24 Result	Met Target	Year End Result Narrative
Explanatory	Statewide public school facility condition index measured on December 31 of prior calendar year	N/A	56	N/A	PSFA continuously assesses schools statewide to determine their deficiencies. These deficiencies determine the FCI . Additionally, completed projects contribute to the statewide average FCI.
Explanatory	Statewide public school facility maintenance assessment report score measured on December 31 of prior calendar year	N/A	77	N/A	76.8% (record high) of the 89 school districts have demonstrated eimprovements above the recommended Satisfactory level with many progressing to good and outstanding levels of performance. This is an indicator that districts are maintaining capital investments to a improved level. A considerable reduction in Marginal and poor performers is recognized.
Explanatory	Total annual dollar change from initial award state match estimate to actual award state match	N/A	\$176,706,844.00	N/A	Of the FY23 that contribute to this total, some were estimated five years ago from time of initial award to actual award. Due to COVID, supply chain issues, lack of qualified workforce, low construction wages in NM, building in remote areas and a large amount of commercial projects around the state; PSFA experience a significant increase in GSF costs.
Outcome	Average number of months from substantial completion to financial closeout	18	12	Yes	PSFA project close out is an interdependent relationship with districts. PSFA worked closely with districts to get needed documentation of projects. Additionally, assigned additional task to assist with project close outs. For FY23 PSFA project close out was approximately 48 months, for the past 6 months that time frame is 3 months.
Outcome	Number of up-to-date preventive maintenance plans	0	71	Yes	PSFA performs continuous outreach to districts assisting with Preventive Maintenance Plans. The outreach is necessary to best support New Mexico School districts in managing effective maintenance programs supporting quality educational environments.
Output	Number of assessments performed on public school facilities year round	0	160	Yes	PSFA staff performed assessments at public school districts state wide.

P940 Public School Facilities

Purpose: The purpose of the public school facilities oversight program is to oversee public school facilities in all eighty-nine school districts, ensuring correct and prudent planning, building and maintenance using state funds and ensuring adequacy of all facilities in accordance with public education department-approved educational programs.

Performance Measures:		2022-23 Actual	2023-24 Actual	2024-25 Budget	2025-26 Request	2025-26 Recomm
Output	Number of assessments performed on public school facilities year round	178	160	190	190	
Outcome	Average number of months from substantial completion to financial closeout	20	12	Discont	Discont	
Outcome	Number of up-to-date preventive maintenance plans	69	71	89	89	
Explanatory	Number of change orders in current fiscal year	39	33	N/A	N/A	
Explanatory	Average number of months between initial award to occupancy	36	46	N/A	N/A	
Explanatory	Average number of months from initial award to commencement of construction	15	32	N/A	N/A	
Explanatory	Average cost per square foot of new construction	\$632.60	\$617.00	N/A	N/A	
Explanatory	Statewide public school facility condition index measured on December 31 of prior calendar year	55	56	N/A	N/A	
Explanatory	Statewide public school facility maintenance assessment report score measured on December 31 of prior calendar year	72	77	N/A	N/A	
Explanatory	Average megabits per second per student	1	1	N/A	N/A	
Explanatory	Total annual dollar change from initial award state match estimate to actual award state match	,000,000.00	,706,844.00	N/A	N/A	
Explanatory	Average square foot per student of middle schools	263	260	N/A	N/A	
Explanatory	Average square foot per student of high schools	387	362	N/A	N/A	
Explanatory	Average square foot per student of new construction, high schools	N/A	N/A	N/A	N/A	
Explanatory	Average square foot per student of elementary schools	230	218	N/A	N/A	
Explanatory	Average square foot per student of new construction, elementary schools	N/A	196	N/A	N/A	
Explanatory	Average square foot per student of new construction, middle schools	N/A	141	N/A	N/A	
Explanatory	Number of awards made for standards, systems, prekindergarten, facility master plans and lease assistance in the fiscal year	New	156	N/A	N/A	
Explanatory	Number of applications received for school facility funding throughout the year	New	53	N/A	N/A	
Explanatory	Number of projects awarded by the public schools capital outlay council that are managed by public school facilities authority regional project managers	28	160	N/A	N/A	
Efficiency	Average number of months from project closeout to financial closeout	New	14	3	3	

Program Description:

Program goals:

The purpose of the program (Public School Facilities Authority) is the following:

- Fund and build safe and sustainable schools
- Be fiscally responsible when establishing costs of construction for new or renovated schools
- Simplify PSFA processes, provide transparency and be responsive to school districts and stakeholders
- Improve communication both internally and externally
- Recognize that PSFA staff is our biggest asset
- Be proactive in the conversations contributing towards the advancements in energy savings and legislation that will help support NM students.
- Analyze and evaluate how we build schools to ensure efficiency and create best practices and standards.

Primary Services Provided:

Guidance and support to school districts for the following:

- Procurement
- Funding and analysis of a districts Facility Master Plans
- Collect school facility data to determine deficiencies
- Guide and mentor districts/schools to prepare them to be able to qualify for PSCOC funding
- Application and project definition (new school, renovation, addition, systems) for potential PSCOC awards
- Maintenance and operations of school facilities
- Outreach

Beneficiaries:

- New Mexico school districts
- New Mexico public school students
- New Mexico tax payers
- New Mexico communities

Current Service Level;

PSFA serves 89 school districts, 101 charter schools and the two constitutional schools (New Mexico School for the Deaf & New Mexico School for the Blind and Visually Impaired)

- 256 active projects
- 83 projects in closeout

Major Issues and Accomplishments:

- Streamline of application process
- Stakeholder outreach
- Collaboration with other state agencies and the Legislature to work on the state/local match funding formula and criteria for local match reduction (waiver).
- Approved 13 more Facility Master Plans
- Revised Master Plan Guidance document and posted on website
- Created a series of planning trainings
- Coordinated a successful Ben Lujan Maintenance Achievement Awards
- Exemplary Maintenance Criteria implemented (5% reduction of local match)
- Close out 414 projects as part of the agency's project closeout project.
- New Design review and document rollout
- Revised and streamline multiple required construction based forms
- Created new Construction Information Management System (CIMS) training modules and streamlined processes.
- Completed 160 site assessments and facilitated 17 district FAD trainings
- New staff onboarding procedures

Overview of Request: This request is a total of \$7,894,228 with an increase of \$483,228 from the FY25 operating budget. Pursuant to NMSA 22-24-4, PSFA's operating budget is based on total annual expenditures from the fund for the core administrative functions not to exceed five percent of the average annual grant assistance authorized from the fund during the five previous fiscal years. Based on the latest calculation, PSFA is authorized to request up to \$11.6M for FY26. The agency wants to create a solid foundation in current personnel and procedures in order to prepare for the next phase of funding.

This year's request includes an increase in salaries as part of a performance-based compensation strategy in order to create a strong human capital foundation which will prepare the agency for the influx of second phase construction projects coming forward for an award. Additionally, this strategy is also geared to create mentors for new employees, as well as create a growth and advancement strategy that will help retain staff and reduce turnover. The requested funding levels allow PSFA to provide enhanced and efficient service to our stakeholders. Additionally, to manage the intensified workload based on the increased number of applications, potential awards and construction projects.

PSFA is also requesting an increase of \$25,000 from the FY25 for a FY26 request of \$225,000. The increase is for professional services to perform various consulting services to include development and editing of public documents and materials such as the annual report and the published Public School Capital Outlay (PSCOC) meeting materials, website redesign, and potential consultant for the continued discussion pertaining to the State/Local Match funding formula analysis.

Programmatic Changes: Continued implementation of process improvement strategies, internal and external communication, internal and external training to promote transparency and consistency.

Base Budget Justification: The PSFA budget is based the rolling average of awards made in previous five years. Based on this analysis, the agency qualifies for up to \$11.6M. PSFA is requesting an increase in salaries as part of a performance-based compensation strategy in order to create a strong human capital foundation which will help prepare the agency for the influx of second phase construction projects coming forward for an award. Additionally, this strategy is also geared to create mentors for new employees, as well as create a growth and advancement strategy that will help retain staff and reduce turnover.

Expansion of two new positions, one Regional Project Manager (RPM), and one Energy Manager.

As it pertains to the RPM position, the industry standard for the number of construction projects managed per RPM is five. Currently, PSFA's RPMs are managing an average of 16 projects concurrently. This position would slightly ease the workload of each other RPM.

There is a push for sustainable and energy efficient design practices. In addition, PSFA has engaged in the Measurement and Verification program that helps school districts track energy savings and lower utility costs. The Energy Manager would spearhead these initiatives.

PSFA is also requesting an increase of \$25,000 from the FY25 for a FY26 request of \$225,000. The increase is for professional services to perform various consulting services to include development and editing of public documents and materials such as the annual report and the published Public School Capital Outlay (PSCOC) meeting materials, website redesign, and potential consultant for the continued discussion pertaining to the State/Local Match funding formula analysis.

Strategic Plan & Collective Vision 2021 - 2023



New Mexico Public School Facilities Authority

Message from the Director

This strategic plan represents the collective vision of the staff at the Public School Facilities Authority (PSFA), describing the intent of our daily work and connecting it to long-term objectives and goals. The five strategic objectives outline the most important guiding principles for our agency. The goals associated with each strategic objective define more specific strategies to direct our agency to specific tasks. This strategic plan communicates PSFA's vision and mission to the Public School Capital Outlay Council (PSCOC), school districts, and stakeholders around New Mexico. This strategic plan is the framework on which our performance can be measured by stakeholders. We believe that our agency will be successful if we continually strive toward these objectives and goals. As a means to keep working toward these goals and focus areas, we develop real, actionable tasks that can be assigned to individuals and groups within our agency. We will follow a 6-month cycle of implementing, tracking the progress of, and completing tasks, then developing new tasks and repeating the process to ensure that the agency adapts to address the evolving needs of school communities in New Mexico. This document is part of an actionable, continuous strategic process.



Executive Summary

The 2021-2023 Strategic Plan for the New Mexico Public School Facilities Authority builds upon a decade of effective strategic planning for the agency. This iteration of strategic planning has attempted to incorporate best practices by thoughtfully assessing the environment in which the agency finds itself operating, then identifying goals that will improve the agency's performance and service to PSCOC and our stakeholders.

Since this strategic plan builds on prior initiatives, the strongly interrelated strategic objectives continue to be related to improving process efficiency, reducing project costs, and increasing the expected longevity of newly designed and existing facilities. In addition, PSFA continues to focus on building stronger partnerships with districts and stakeholders and strengthening the agency team.



New Mexico Public School Facilities Authority

PSFA in partnership with New Mexico's public schools provides quality, sustainable, and well maintained school facilities for our students and educators

Vision

What PSFA aspires to become as the future unfolds

Leading New Mexico's public schools to national excellence in capital projects and their infrastructure systems.

Mission

What PSFA exists to accomplish as it serves its stakeholders.

Through efficient use of state and local resources, NMPSFA will support our school communities in providing quality, sustainable, safe and adequately equipped facilities that enhance educational outcomes for students and staff.

Core Values

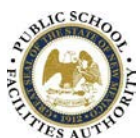
What PSFA commits to as it serves its stakeholders.

- Creating safe and sustainable schools.
- Demonstrating best practices in administering funds.
- Maintaining clarity and simplicity.
- Serving our customers' needs.
- Responding with transparency.
- Manifesting ethical behavior.

Our Promise

What PSFA strives for as it responds to its mission.

We always remember that our employees are the strength of our agency and that only through their empowerment and development can our mission be realized.



New Mexico Public School Facilities Authority

PSFA in partnership with New Mexico's public schools provides quality, sustainable, and well maintained school facilities for our students and educators

Strategic Objective:

Building stronger partnerships



What makes this focus area strategic and why is it important?

PSFA’s mission is based on partnerships. We work with school districts and charter schools to design and build the best possible school facilities for the children of New Mexico. We strive to make these facilities, long-lived, and easy to maintain. We offer professional expertise, statewide knowledge, and sound advice on issues related to funding, procurement, planning and design, project management, and facility management. However, all of this is possible only with strong, positive, and enduring relationships with our school districts, charter schools, and stakeholders we serve—our customers.

Goals to address this strategic objective:

- Simplify access to PSFA funding and information as measured by a well-designed and administered “satisfaction” survey.
- Develop and administer customer satisfaction survey to assess relevant aspects of the agency’s performance.
- Transparency with school districts, charter schools, and stakeholders with improved access to information.
- Continue to improve and utilize PSFA website to disseminate vital information. Track website statistics to measure frequency of access, and to determine areas of high interest and importance to users.

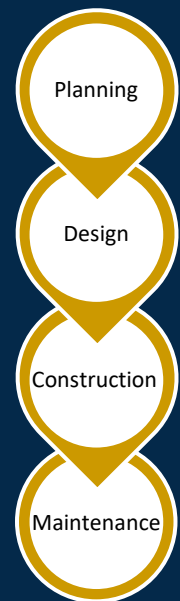


New Mexico Public School Facilities Authority

PSFA in partnership with New Mexico’s public schools provides quality, sustainable, and well maintained school facilities for our students and educators

Strategic Objective:

Planning, designing, constructing, and maintaining the best possible school facilities



What makes this focus area strategic and why is it important?

PSFA's value to school districts, charter schools, and stakeholders is directly related to the planning, design and construction of the best facilities possible with funding available. We provide expertise to support the creation and construction of 21st century facilities for New Mexico's students. As these facilities are built, we create added value to school districts and charter schools.

Goals to address this strategic objective:

- Increase outreach to school districts and charter schools to effectively partner on projects, support maintenance, facilitate decisions and develop facility knowledge, as measured by tracking the currency of master plans and submission of standards-based and systems-based applications.
- Measure the facility and project data in PSFA core information systems to improve cross platform search-ability, cross-referencing, sorting, and analysis by PSFA staff, school districts, charter schools, and stakeholders.
- Help schools increase the longevity of facilities to maximize the capital investment.
- Renew and/or replace inefficient buildings or systems.
- Review district participation in data sharing to measure current facility conditions.

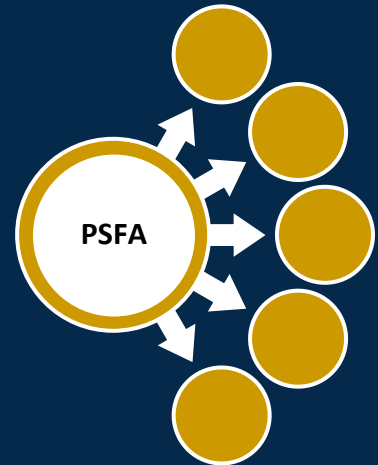


New Mexico Public School Facilities Authority

PSFA in partnership with New Mexico's public schools provides quality, sustainable, and well maintained school facilities for our students and educators

Strategic Objective:

Advancing Communication



What makes this focus area strategic and why is it important?

Effective communication is important for school districts and charter schools to understand PSFA's purpose, processes, procedures, services and policies to promote quality school construction and efficient maintenance. PSFA projects and services have a tremendous fiscal and physical impact throughout the State.

Goals to address this strategic objective:

- PSFA will participate in groups and organizations to support the PSFA mission.
- PSFA will resume utilizing a newsletter, distributed electronically to all stakeholder groups, to reinforce key information and highlight successful projects.
- PSFA will have a strong presence at stakeholder events and conferences to both inform and promote the agency mission.
- PSFA services should be easily understood and embraced as a measure of clear progress toward educational excellence.

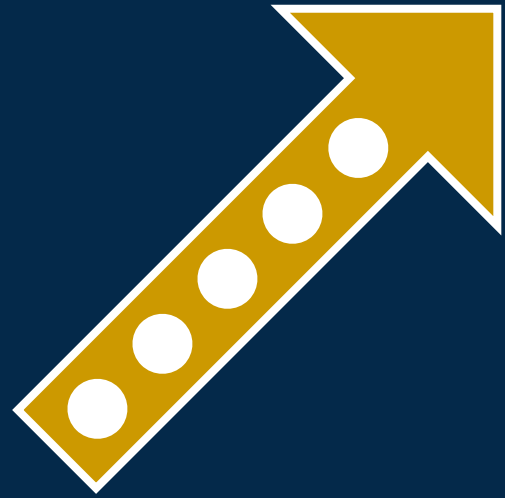


New Mexico Public School Facilities Authority

PSFA in partnership with New Mexico's public schools provides quality, sustainable, and well maintained school facilities for our students and educators

Strategic Objective:

Improving and streamlining agency processes



What makes this focus area strategic and why is it important?

PSFA is continually tasked with being fiscally responsible. Improving, streamlining, and refining our processes reduces school district and charter school facility costs.

As we make our processes more efficient, school districts and charter schools find us easier to work with and relationships are enhanced through improved communication and productivity.

Improved processes provide consistency and continuity, which leads to better fiscal responsibility. In addition, consistency allows our partners to know what to expect from us.

Goals to address this strategic objective:

- Continue developing electronic processes and tools to gather facilities data with uniform reporting to allow for improved analysis.
- Provide process transparency and data reporting as measured by a well-designed and administered survey of stakeholders.
- Develop and administer such customer satisfaction surveys.



New Mexico Public School Facilities Authority

PSFA in partnership with New Mexico's public schools provides quality, sustainable, and well maintained school facilities for our students and educators

Strategic Objective:

Strengthening the agency team



What makes this focus area strategic and why is it important?

PSFA is staffed by a range of highly trained professionals. As we institute best practices in training, communication, and human resources development we strengthen our team.

Goals to achieve this strategic objective:

- Develop a culture that encourages continuous process improvement to drive the core mission of providing expertise to support schools as measured by an internally developed and administered survey.
- Encourage internal teaming.
- Continue and expand support for staff professional development by conducting a staff training “needs assessment.”
- Provide staff with necessary technical resources and equipment to fulfill their job responsibilities, as measured by a well-designed and administered survey.
- Seek approval for additional FTE, as cyclical project and programmatic needs warrant.



I. FY26 Appropriation Request

II. Presenter(s): Iris K. Romero, Executive Director

III. Potential Motion:

Subcommittee recommendation for Council approval for PSCOC approval of the proposed \$7,894,228 budget.

IV. Executive Summary:

Staff Recommendation:

Staff recommends to approve the proposed budget.

Key Points:

Public School Facilities Authority Budget				
Category	FY24 Actuals	FY25 OpBud	FY26 Request	FY25 OpBud Vs FY26 Request
200's <i>(Personal Services & Employee Benefits)</i>	5,553,938	5,938,100*	6,396,328	458,228**
300's <i>(Contractual Services)</i>	140,942	200,000	225,000	25,000
400's <i>(Other)</i>	665,147	1,272,900	1,272,900	0
Total	6,360,027	7,411,000	7,894,228	483,228

*includes 3% COLA

**Employee liability insurance went from \$10K to \$100K

- FY25 Request 200's (Personal Services & Employee Benefits):
 - Management is requesting a 3% of the total Exempt/Perm positions as part of the performance based compensation strategy totaling \$153,023 (Executive Director position is not included in the calculation)
 - Staff is requesting 2 position to include:

Position Requests for FY26

Position Requests	Estimated Salaries for Request							
Job Title	Hourly	Salary	PERA	FICA	RHCA	Insurance	Benefits	Total
Regional Project Manager	38.46	80,000.00	14,992.00	6,120.00	1,600.00	4,899.70	27,611.70	107,611.70
Energy Manager	38.46	80,000.00	14,992.00	6,120.00	1,600.00	4,899.70	27,611.70	107,611.70
Total:								215,223.40

- FY26 Request 300's (Contractual Services): staff is requesting an increase in contractual services to assist us to better serve our stakeholders.
 - Editing and development of Annual reports and other like materials
 - Improvement of our website, to provide easier navigating for all of our stakeholders
 - Additional services to support our server room
 - Auditor
 - Audit consultant
 - On-call legal
 - Rebranding based on Strategic Plan work
 - Consultant to continue State/Local match analysis (ex. BBER)

PUBLIC SCHOOL FACILITIES AUTHORITY

Leased Vehicles

No.	ISSUED	LICENSE	VIN	Year & Make/Model
1	5/20/2020	006958SG	2C3CDXBG6KH754589	2019 Dodge Chargers
2	5/20/2020	007513SG	2C3CDXBG5KH700457	2019 Dodge Chargers
3	7/21/2021	008354SG	2T3F1RFV4MW196458	2021 Toyota RAV4
4	5/22/2022	008451SG	1N4BL4BV2MN399153	21 Nissan Altima
5	5/22/2022	008754SG	1N4BL4BV3MN398383	21 Nissan Altima
6	5/22/2022	008755SG	1N4BL4BV2MN399511	21 Nissan Altima
7	12/31/2021	009035SG	1N4BL4BV3MN399064	21 Nissan Altima
8	5/22/2022	009156SG	1N4BL4BV8MN398783	21 Nissan Altima
9	12/31/2021	009211SG	1N4BL4BV8MN399352	21 Nissan Altima
10	1/22/2022	009254SG	2C4RC1FG0MR579494	2021 Chrysler Pacifica
11	4/25/2024	010418SG	3GNAX5EG4RL262632	2024 Chevy Equinox
12	4/17/2024	010419SG	3GNAX5EG2RL262631	2024 Chevy Equinox
13	4/25/2024	010420SG	3GNAX5EG8RL262617	2024 Chevy Equinox
14	4/25/2024	010421SG	3GNAX5EG3RL262606	2024 Chevy Equinox
15	4/17/2024	010422SG	3GNAX5EG0RL262594	2024 Chevy Equinox
16	4/25/2024	010423SG	3GNAX5EG5RL262591	2024 Chevy Equinox
17	5/2/2024	010472SG	3GNAX5EG4RL270844	2024 Chevy Equinox
18	5/2/2024	010473SG	3GNAX5EG8RL270846	2024 Chevy Equinox